

— 2018 —

# SYDNEY HARBOUR

## REGATTA

### Notice to Competitors 2018-03-02-1

## Amendments to Sailing Instructions

The 2018 Sydney Harbour Regatta Sailing Instructions are amended as follows:

**SI 1.5** The following Racing Rules of Sailing (RRS) will be amended:

RRS 52: Is changed so that it 'does not apply to the adjustment and operation of sails or to the adjustment of movable appendages on any boat.' This Rule is changed to permit powered winches for boats over 10.0m LOA.

**Appendix IV. 3.2** Description of Courses – Windward / Leeward

The course to be sailed will be indicated by course board displayed on the Starting Vessel or by numeral pennant displayed with the class flag.

Competitors are advised that a different course signal may be used for each Class.

Please note: If indicated by a course board, the course designation may be prefixed with the letter "W".

Courses	Description (All marks to Port except Gate)
1	START – 1 – FINISH
2	START – 1 – Gate – 1 – FINISH
3	START – 1 – Gate – 1 – Gate – 1- FINISH
4	START – 2 – FINISH
5	START – 2 – Gate – 2 – FINISH
6	START – 2 – Gate – 2 – Gate – 2- FINISH

AIR NEW ZEALAND 

 ROBERT OATLEY

  
Abell Point  
MARINA  
Stay. Play. Explore.

  
HELLY HANSEN

  
Mercure  
HOTELS  
MERCURE RESORT  
HUNTER VALLEY GARDENS

  
SYDNEY  
CITY  
MARINE

**Appendix IV. 3.8** Description of Marks – Harbour Courses

Marks	Description	Marks	Description
CBN	AS Mark Chowder Bay North	NP	AS Mark Nielsen Park
EC	AS Mark East Channel	N2	Naval Buoy 2 (approx. 150m NW of Clarke
KP	Kirribilli Point (SASC Inflatable - White)	RB	AS Mark Rose Bay
LB	AS Mark Lady Bay	SM	AS Shark Island Mark
TB	AS Mark Taylor Bay		

Marks	Description
AS MARKS	Yellow Spar Marks
START / FINISH	Orange Inflatable with SASC Markings
SASC INFLATABLE	White Inflatable (SASC)

**Appendix V. 2** Class Flags

Division	Class Flag
Division 1 (includes X-Yachts)	Int. Code Flag "O"
Division 2	Int. Code Flag "R"
Division 3	Int. Code Flag "Q"

**Appendix V. 3.2** Description of Courses

The course to be sailed will be indicated by course board displayed on the Starting Vessel or by numeral pennant displayed with the class flag.

Competitors are advised that a different course signal may be used for each Class.

Please note: If indicated by a course board, the course designation may be prefixed with the letter "C".

The approximate bearing to the first top mark may be displayed from the Committee Vessel.

Courses for Divisions: 1, 2 & 3

Courses	Start Area	Description	Finish Area
1 (N)	Camp Cove	Start – MW – ME – EC – MW(*) – ME(*) – Finish	Camp Cove
2 (NNE)	Hunters Bay	Start – MW – ME – CBN – MW(*) – ME(*) – Finish	Hunters Bay
3 (NE)	Hunters Bay	Start – CP – EC – CBN – CP – CBN(*) – Finish	Hunters Bay
4 (E)	Hunters Bay	Start – MHNH(P) – RP – EB – MHNH(P)(*) – Finish	Hunters Bay
5 (SE)	Hunters Bay	Start – EC – RB – OB – NP(*) – Finish	Hunters Bay
6 (S)	North	Start – RB – OB – RB(*) – Finish	North
7 (SW)	Spring Cove / Cannae Point	Start – EB – CP – EB – CP(*) – EB(*) – Finish	Spring Cove / Cannae Point
8 (W)	Spring Cove / Cannae Point	Start – EB – MHNH – EB – MHNH(*) – EB(*) – Finish	Spring Cove / Cannae Point
9 (NW)	Camp Cove	Start – GP – CP – NP – CBN(*) – MHNH(P)(*) – GP(*) – Finish	Camp Cove

3.3 All Marks are to be rounded or passed to Starboard except those suffixed with the letter (P) which shall be rounded or passed to Port.

3.4 If Code Flag S is displayed with the warning signal, boats shall omit marks suffixed (\*).



**Appendix V. 4** The Start

Boats starting later than 5 minutes after her starting signal will be scored did not start (DNS). This changes RRS A4.1.

For the first race of each day, races will be started in the order of:

- Division 1
- Division 2
- Division 3

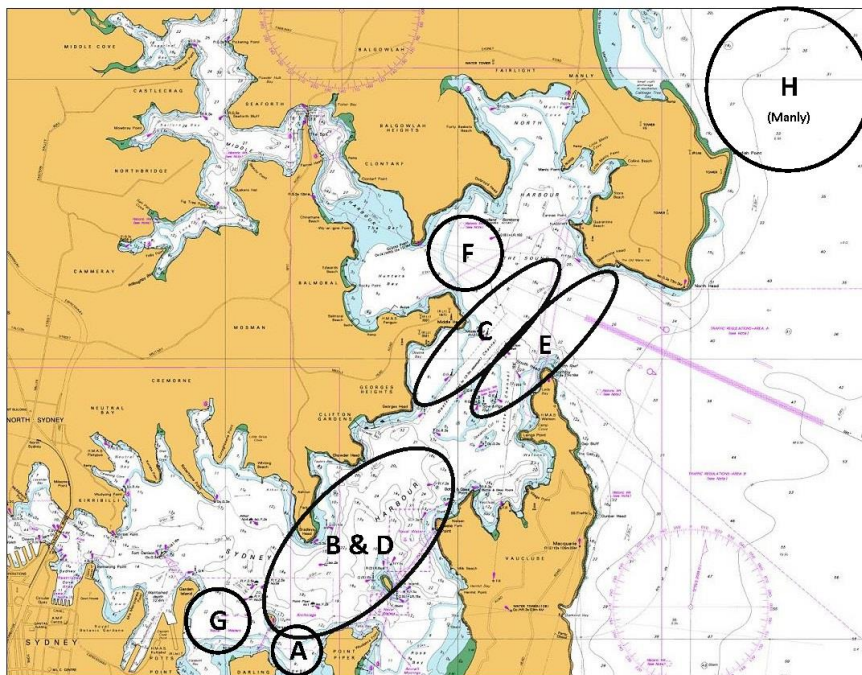
**Appendix VI. 4** The Start

Boats starting later than 5 minutes after her starting signal will be scored did not start (DNS). This changes RRS A4.1.

The Performance Class (Non-Spinnaker) races will be started in the order of:

- Division 1
- Division 2

**Appendix “IX”** Typical North Easterly Course Areas



A revised version of the 2018 Sydney Harbour Regatta Sailing Instructions, incorporating the above changes, has been posted to the event website at [www.shr.mhyc.com.au/racing/sailing-instructions](http://www.shr.mhyc.com.au/racing/sailing-instructions)

**David Staley**

*MHyc Sailing Manager*

*Sydney Harbour Regatta Organising Committee*

*2 March 2018 at 1200hrs*

