



MHYC
MIDDLE HARBOUR YACHT CLUB

— 2018 —

SYDNEY HARBOUR REGATTA

13th Anniversary

Saturday 3rd & Sunday 4th March

SAILING INSTRUCTIONS

Updated March 2, 2018

SPONSORED BY...



SUPPORTED BY...



SYDNEY HARBOUR REGATTA
Saturday 3rd & Sunday 4th March 2018

ALLOCATION OF CLASSES TO COURSE AREAS

Course Area 'A' – Sydney Flying Squadron

- Historic 18' Skiffs (EHC)

Course Area 'B' – Royal Sydney Yacht Squadron

- International Yngling Class [OD]
- International Etchells Class (OD)

Course Area 'C' – Royal Prince Alfred Yacht Club

- Sports Boats [SMS]
- International J70 Class [OD]

Course Area 'D' – Sydney Amateur Sailing Club

- Performance Class, Super 30 Division 1 [EHC]
- Performance Class, Cruiser Racers Division 2 [PHS]
- Super 12 Class [PHRF]

Course Area 'E' – Royal Prince Edward Yacht Club & Middle Harbour Yacht Club

- Adams 10 Class [OD]
- Cavalier 28 Class [EHC]

Course Area 'F' – Manly Yacht Club & Middle Harbour Yacht Club

- Performance Class, Spinnaker: Division 1 [PHS]
- Performance Class, Spinnaker: Division 2 [PHS]
- Performance Class, Spinnaker: Division 3 [PHS]

Course Area 'G' – Royal Australian Naval Sailing Association

- Performance Class, Non Spinnaker: Division 1 [PHS]
- Performance Class, Non Spinnaker: Division 2 [PHS]

Course Area 'H' – Cruising Yacht Club of Australia

- Open Class: Division 1 [IRC / ORCi]
- Open Class: Division 2 [IRC / ORCi]
- Sydney 38 One Design Class [OD]

Course Areas are shown in Appendix 'IX'

GENERAL SAILING INSTRUCTIONS

Middle Harbour Yacht Club (MHYC) as the Organising Authority, will conduct the Sydney Harbour Regatta on the waters of Sydney Harbour and the nearby Tasman Sea on Saturday 3rd and Sunday 4th March 2018. Further instructions for each Class or Division are detailed in each Series Appendix, which forms part of the Sailing Instructions.

1 RULES

- 1.1 The Sydney Harbour Regatta will be governed by the following;
- the rules as defined in The Racing Rules of Sailing,
 - the Special Regulations of Australian Sailing (AS), and
 - the current IRC Rules, Parts A, B and C (if applicable),
 - the Regulations of NSW Roads and Maritime Services in regards to Ships and Ferries exclusion zones, except as any of these are modified by these Sailing Instructions.
- 1.2 At the discretion of the Organising Authority, a Class or Division with less than six (6) eligible entries may be abandoned or combined with another class or division.
- 1.3.1 A National Jury has been approved by Australian Sailing. The Jury will hear all protests and requests for redress, in accordance with Australian Sailing Addendum A to the RRS. The decision of the National Jury will be final and not subject to appeal, as provided in RRS 70.5.
- 1.3.2 For protests involving an alleged breach of the rules of Part 2 of the RRS, an arbitration hearing may be held prior to a protest hearing. A boat that accepts fault at an arbitration hearing will be penalized by having its race score increased by 30% of the difference between the boat finishing score and the score for DSQ in its Class or Division, rounded to the nearest whole number. All other boats scores will remain the same. Once accepted, this decision is not subject to reopening or appeal. This alters RRS 63, 64.1, 66 and Appendix A.
- 1.3.3 For all Classes, scoring penalties shall apply at the discretion of the Jury.
- 1.3.4 The Jury may go afloat to observe racing. Whilst afloat the jury may sound a whistle to indicate they have observed a racing incident.
- 1.4 Boats in the Performance Non-Spinnaker Class shall not fly spinnakers. Only a mainsail and headsails as defined in RRS 50.4 shall be used. Headsails shall not be set flying. Headsails may be poled out but must be tacked to the foot of the forestay and fully attached to the forestay. No sail shall be set forward of a point of attachment of the permanent forestay.
- 1.5 The following Racing Rules of Sailing (RRS) will be amended:
- RRS 41: Is changed that, 'whilst racing a boat may retrieve data from any page of the Event or MHYC Websites, even if that page is not publicly available.'
 - RRS 44.1: Is changed that 'only a one (1) turn penalty, including one (1) tack and one (1) gybe is required, except for infringements that occur within the "zone" of a rounding mark.'
 - RRS 50.2 and 50.3: Fixed and retractable spinnaker poles and bowsprits are permitted for the purpose of setting asymmetrical spinnakers.
 - RRS 51: Subject to NoR 1.2.2, a boat with movable or variable ballast (within the meaning of those terms in the Special Regulations) may move that ballast for the purpose of changing trim or stability.
 - RRS 52: Is changed so that it 'does not apply to the adjustment and operation of sails or to the adjustment of movable appendages on any boat.' This Rule is changed to permit powered winches for boats over 10.0m LOA.
 - RRS 78.2: Where required, valid Rating / Class certificates shall be produced by the due date specified in this Notice of Race.
 - RRS35, A4.2 and A5: Are amended so that boats still racing at the expiration of the race time limit will be scored points equal to the number of boats finishing within the time limit plus a score of 30% of the number of starters rounded to the nearest whole number, but no more points than the number of starters.
- 1.6 Boats shall request permission from the Race Committee to use movable and/or variable ballast for the purpose of increasing stability. Any such request must be accompanied by full details of the system involved, and any such system will be taken into account in establishing the boats handicap. Stored power may be used for the operation of movable ballast systems and for the adjustment and operation of sails or the adjustment of movable appendages. RRS 51 and 52 are changed to the extent as detailed by this paragraph.
- 1.7 Unless in use, no part of any anchor may project forward of the bow at any time whilst racing. Anchors which are stowed as an integral part of the bowsprit and whose shaft is secured within a slot on the bow are permitted.
- 1.8 The Adams 10 Class Rules are amended at the request of the Class to permit the use of Mast Head Spinnakers. Mast Head spinnakers shall conform to the following maximum measurements:
- | | |
|-------------------------------|----------|
| Maximum Luff | 13,689mm |
| Maximum SMV | 8,230mm |
| Maximum length spinnaker pole | 3,727mm |

1.9 Special Regulations:

The following Australian Sailing Special Regulations Categories will apply:

CLASS (SERIES)	AS SPECIAL REGULATIONS
Open Class, Sydney 38 Class	Category 4
All Other Keelboat Classes	Category 7
Historic 18' Skiffs	Part 2

1.10 The Race Committee may inspect any boat at any time for Special Regulation and Class rule compliance. Any alleged breaches may be protested by the race committee only.

1.11 Competing boats shall report to their Course Area Race Committee Vessel, with mainsail hoisted on starboard tack, prior to the warning signal of the first race of each day of racing to confirm their intention to compete. Boats which cannot be identified prior to their warning signal may be scored as DNS.

1.12 Competing boats which retire from racing shall advise their Course Area Race Committee Vessel at the earliest opportunity or contact the MHYC Sailing Office in person or by phone (02) 9969 1244.

2 ELIGIBILITY

Eligibility is in accordance with the Notice of Race.

3 NOTICES TO COMPETITORS

Notices will be posted on the Official Notice Board located in the Breezeway at Middle Harbour Yacht Club. Copies of notices may also be published on the event website: www.shr.mhyc.com.au.

4 CHANGES IN SAILING INSTRUCTIONS

Any changes to Sailing Instructions will be posted on the Official Notice Board at least 2 hours before the scheduled start time of the first race for which they will take effect.

Any changes to Sailing Instructions made afloat will be indicated by the display of Code Flag 3rd Substitute accompanied by two sound signals. The change will be communicated verbally on the designated course VHF Channel and/or displayed on the Course Area Race Committee Vessel.

Changes to the schedule of races will be posted on the Official Notice Board before 2000hrs on the day preceding the race concerned and may also be posted on www.shr.mhyc.com.au.

5 RADIO COMMUNICATION

5.1 The Race Committee may broadcast the course to be sailed, names/sail numbers of OCS boats, and/or other information of interest to competitors on the appropriate course VHF channel. Any failure of, or defect in, such a broadcast will not be grounds for redress. This alters RRS 60.1 and 62.

5.2 A boat shall neither make radio transmissions whilst racing nor receive radio communications not available to all boats. This restriction also applies to mobile telephones.

6 SIGNALS

6.1 Signals made ashore will be displayed from the MHYC flagstaff located on the North Eastern perimeter of the Club House (Starters Box).

6.2 Code Flag AP with two sounds (one sound when lowered) means "Racing is postponed. The warning signal will be made not less than 60 minutes after AP is lowered".

7 SCHEDULE OF RACES

Please refer to each Class / Division Sailing Instruction Appendix for further detail.

CLASSES/ DIVISIONS	APPENDIX	COURSE AREA	RACE COMMITTEE	VHF	SAT 3	SUN4
Historic 18' Skiffs	VII	A	SFS	73	Harbour Race	-
Int Etchells Class	III	B	RSYS	74	3 x W/L	-
Int. Yngling Class	III	B	RSYS	74	3 x W/L	3 x W/L
Sports Boats	II	C	RPAYC	77	3 x W/L	3 x W/L
Int. J70 Class	II	C	RPAYC	77	3 x W/L	3 x W/L
Super 12 Class inc MC38	IV	D	SASC	72	3 x W/L	2 x Harbour
Super 30 Class	IV	D	SASC	72	2 x W/L	2 x Harbour
Cruiser Racers	IV	D	SASC	72	2 X W/L	-

Adams 10m Class	II	E	MHYC/RPEYC	71	3 x W/L	3 x W/L
Cavalier 28 Class	II	E	MHYC/RPEYC	71	3 x W/L	3 x W/L
Performance Class (Spinnaker) Div 1-3	V	F	MYC/MHYC	72	2 x Harbour	2 x Harbour
Performance Class (Non-Spin) Div 1 & 2	VI	G	RANSA	73	2 x Harbour	2 x Harbour
Open Class Divs 1 & 2	I	H	CYCA	73	3 x W/L	3 x W/L
Sydney 38 OD	I	H	CYCA	73	3 x W/L	3 x W/L
LEGEND						
W/L – Offshore Windward Leeward / Laid Marks Courses						
W/L – Inshore Windward Leeward / Laid Marks Courses						
Harbour – Fixed and Laid Mark Courses in Sydney Harbour						

8 THE START LINE

The starting line will be between a signal mast displaying an Orange Flag on the Race Committee Vessel and a port end starting mark.

9 THE FINISH LINE

9.1 The finishing line will be between a signal mast displaying an Orange Flag on the Race Committee vessel and a nearby finishing mark.

9.2 Boats shall not pass through the 'Finish Line' when in use, except when finishing. Boats failing to comply with this may be protested by the Race Committee only.

10 EVENT ADVERTISING

10.1 Not Used

11 OFFICIAL VESSELS

Official boats may be identified as follows:

Race Committee Vessels may display a Course Area flag together with the conducting Clubs burgee or flag. Mark boats may display the conducting Clubs burgee or flag.

12 PROTEST AND REQUEST FOR REDRESS

12.1 Protests shall be lodged at the MHYC Office within 90 minutes of the finish time of the last boat in the protesting boat's Class or Division in the last race of the day. Protest forms are available from the MHYC Regatta Office or online on the event website. Protests may be lodged in person or by email to sailing@mhyc.com.au.

12.2 Notification of the details of protest hearings will be placed on the Official Notice Board as soon as possible to inform competitors when there is a hearing in which they are parties to a protest or named as a witness. All hearings shall take place in the Quarter Deck at MHYC. These notices are deemed to fulfil the requirements of RRS 63.2. Representatives of boats, who are parties to hearings, and their witnesses, are advised to remain on call in the vicinity of the MHYC (or any other place as directed by the jury).

12.3 RRS 66 is changed by adding: "on her last day of racing, a party to the hearing may ask for a reopening no later than half an hour after being informed of the decision."

12.4 In accordance with RRS 64.1, for a breach of a rule of RRS Part 2, the Jury may award a disqualification or a time penalty. For all other rules the penalty shall be at the discretion of the Jury which may include no penalty.

13 ARBITRATION

13.1 For protests involving an alleged breach of the rules of Part 2 of the RRS, an arbitration hearing may be held prior to a protest hearing.

13.2 The arbitrator may be a member of any subsequent jury or may observe and give testimony to the jury. This changes RRS 63.3(a).

14 RESULTS

Results will also be posted to the event website at www.shr.mhyc.com.au.

Results may be posted on the Regatta results boards as soon as practicable after the last yacht in each class finishes the last race each day. The Regatta results board will be located on the beachfront walkway at MHYC.

15 SCORING SYSTEM

- 15.1 The "Low Point System" RRS Appendix A will apply except there shall be no discards and a boat's total score will be the sum of her scores in all races completed.
- 15.2 Number of scheduled races, number of races required for a Series and Handicap System

CLASS (SERIES)	RACES SCHEDULED	REQ'D FOR SERIES	HANDICAP SYSTEM
Open Class (Divisions 1-2)	6	1	IRC / ORCi
One Design Class – Sydney 38	6	2	OD
One Design Class - Adams 10	6	1	OD
International Etchells Class	3	1	OD
One Design Class - International J70	6	1	OD
One Design Class - International Yngling	6	1	OD
Sports Boat Class	6	1	SMS
Super 12 Class	5	1	PHRF
Cavalier 28 Class	6	1	PHS
Super 30 Class	4	1	PHS
SASC Cruiser Racer Class	2	1	PHS
Performance Class (Spinnaker: Divisions 1 - 3)	4	1	PHS
Performance Class (Non-Spinnaker: Divisions 1 - 2)	4	1	PHS
Historic 18' Skiffs	1	1	EHC

16 ALTERNATIVE PENALTIES

For Classes and Divisions sailing Windward / Leeward courses only, the Two Turns Penalty (RRS 44.1) is changed to a One Turn Penalty except for infringements that occur within the zone of a rounding mark.

17 TIME LIMIT

Boats still racing when her time limit expires will be scored points equal to the number of boats finishing within the time limit plus 30% of the number of starters rounded to the nearest whole number, but no more points than the number of starters. Such boats will be scored time limit expired (TLE). This changes RRS 35, A4.2 and A5.

18 HANDICAPS

- IRC handicaps will be the boat's TCC rating as stated on the boat's IRC certificate.
- ORCi handicaps will be the boat's Time-on-Time Inshore rating as stated on the boat's ORCi certificate
- One Design Classes; Adams 10, Int. 5.5m, Int. J70, Int. Melges 20, Int. Yngling, Int. Etchells, Int. Dragon and Sydney 38 will have no handicap and will be scored on elapsed time (One Design).
- Event Handicaps (EHC) will be supplied by the Regatta Handicap Committee.
- Performance based handicaps (PHS) including event handicaps (EHC) may be changed at any time during the regatta.

The decision of the Race Committee or their representative on any handicap matter will be final and will not be grounds for requests for redress. This alters RRS 60.1 (b).

19 COURSE AREAS

Course Areas as shown in Appendix IX are approximate only and may be changed by the Organising Authority.

20 SUPPORT BOATS

Team leaders, coaches and other support personnel shall not be in the racing area from the time of the preparatory signal until all boats have finished or the Race Committee signals a postponement, general recall or abandonment.

The penalty for failing to comply with this requirement may be disqualification of all boats associated with the support personnel who do so.

21 HAUL OUT RESTRICTIONS AND PLASTIC POOLS

There shall be no restriction on the use of plastic pools or haul out of boats or the use of underwater breathing apparatus under boats during the Sydney Harbour Regatta.

22 PRIZES

- 22.1 The Official Presentation and Prize Giving will be held at **1900hrs on Monday 05 March 2018**, at the Middle Harbour Yacht Club. Prizes may be awarded to the overall winners (1st) and place getters (2nd and 3rd) in each Class or Division consisting of six (6) or more entrants. Additional Sponsor Prizes may also be awarded. All competitors are invited to attend.
- 22.2 Grand Prizes offered by the Organising Authority and Event Sponsors will be drawn at the Official Presentation. Details, terms and conditions have been published in a Notice to Competitors published on the event website.
- 22.3 The Organising Authority will offer a winning boat's registered Club the opportunity to display Perpetual Trophies at their registered Club. This will be subject to the completion of the engraving of the winning boat's name and held until one (1) month prior to the next Sydney Harbour Regatta. Where a registered Club declines this offer, Perpetual Trophies will be held on display by the Organising Authority.

23 DISCLAIMER OF LIABILITY

All those taking part in races conducted by the Organising Authority do so at their own risk and responsibility. The Organising Authority is not responsible for the seaworthiness of a yacht whose entry is accepted or the sufficiency or adequacy of its equipment.

The Organising Authority is not responsible for any damage or injury, either ashore or at sea to persons or yachts which might result from participating in races conducted by the club.

Attention is drawn to ISAF fundamental rule 4: decision to race: ***"the responsibility for a boat's decision to participate in a race or to continue racing is hers alone"***.

24 MEDIA

With the consent of the Organising Authority, a boat may carry on board a Media Representative for the purposes of photography, filming, sound recording and journalism and who shall not participate in the sailing or navigation of the boat. Such media representative shall be exempt from the boat's compliance with its Class Rules in respect of Crew Numbers and Crew Weight.

25 CARDINAL MARKS AND FERRIES AND COMMERCIAL SHIPPING

25.1 Cardinal Marks

Boats shall pass on the safe water side of all Sydney Harbour Cardinal Marks.

Boats shall not sail in the following prohibited areas:

- The area bounded by imaginary lines projected from the shore joining the West, South and East Cardinal Marks surrounding Gowland Bombora.
- The area bounded by imaginary lines joining the North, East, South and West Cardinal Marks surrounding Sow and Pigs Reef.
- The area between AS Mark Shark Island and the South Cardinal Mark Shark Island.

For the purpose of RRS 18 and 19, all Cardinal Marks surrounding the Gowland Bombora and the Sow and Pigs Reef and all imaginary straight lines projected between such marks, shall be deemed obstructions.

25.2 Ferries and Commercial Shipping

Boats shall not interfere with the Commercial or Defence Shipping of the Port and shall not approach closer than 30m on either side or astern or 500m ahead of any commercial ship and pass ferries clear at least 200m from the bow and 30m either side or astern. Refer to Illustration of Ferry and Ship Activated Exclusion Zone.

Commercial ships and ferries may be escorted by a NSW Roads and Maritime Services vessel. Competing boats shall not obstruct these escort vessels, cause it/them to move station or collide with them. Competing boats shall obey all instructions of the escort vessel and shall not pass between the ship being escorted and the escort vessel. Complying with an instruction of an escort vessel shall not be grounds for redress under RRS 62.

- 25.3 Any boat observed by the Race Committee to breach the requirements of SI25 or against whom a complaint is received from NSW Roads and Maritime Services, Sydney Ports, Harbour City Ferries, or the Master of a commercial or recreational vessel may be subject to action by the Race Committee or Protest Committee under RRS Part 5, Section A.



Yacht Person's Brief

1. Be Safe!
2. Observe NSW Collision regulations and in particular Rule 1 (b) and Rule 2(a) (b) ie: Nothing in these Rules shall exonerate any vessel, or the owner, master or crew thereof, from the consequences of any neglect to comply with these Rules or of the neglect of any precaution which may be required by the ordinary practice of seamen, or by the special circumstances of the case.

In complying with these Rules due regard shall be had to all dangers of navigation and collision and to any special circumstances, including the limitations of the vessels involved, which may make a departure from these Rules necessary to avoid immediate danger.

What this means is that if you're about to be involved in a collision, having stood on or give way in accordance with the Rule; every party involved is responsible in taking avoiding action to prevent a collision.

3. Local Rules require sail craft to keep out of the way of ferries, large cruise ships and oil tankers. Do not impede the safe passage of Commercial Vessel Shipping. Pass at least 500m ahead of their bow. Pass the ferries clear at least 200m from the bow and 30m either side and astern.

Be mindful of larger ships' bow flare. When closing any vessel, to prevent being overrun ensure you remain within sight of the Master / Officer of the Watch on the vessel's bridge. Beware of overhanging bows and other parts of ship that might obstruct this line of sight. This means that your vessel may disappear from sight inside 500m from the bows of very large ships.

Shipping Sound Signal Meanings:

One short blast – I am altering course to starboard (right).

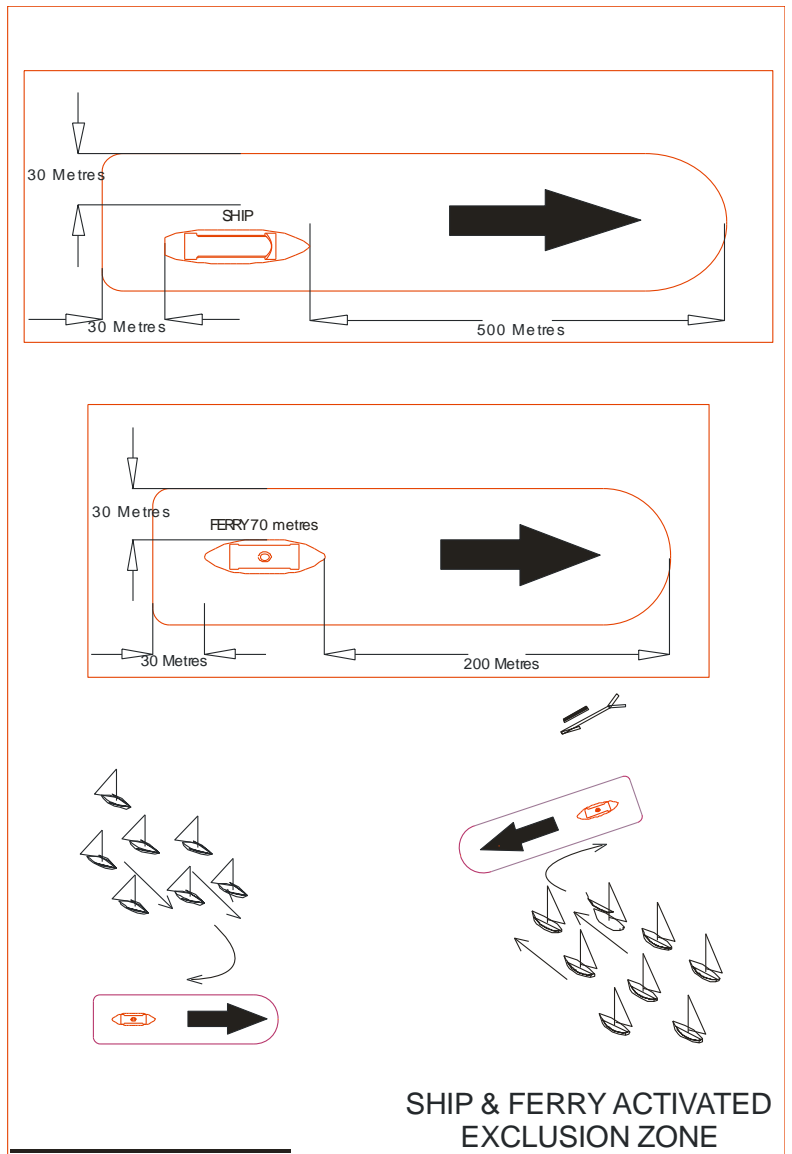
Two short blasts – I am altering course to port (left).

Three short blasts – I am operating engines astern (stopping).

Five (or more) short blasts – I'm unsure of your intentions and I doubt whether you are taking enough avoiding action to avoid collision.

When not racing keep at least 200m clear of any ferry displaying the Orange Diamond.

4. Vessels shall not navigate between moorings whilst racing.



EMERGENCY GUIDE – PORT JACKSON

AMBULANCE | POLICE | FIRE: 000 OR 122

NSW Police Marine Area Command: 1800 658 784
NSW RMS (Maritime) 13 12 36
Middle Harbour Yacht Club: 9969 1244

NSW Marine Recue Port Jackson 9337 5033
NSW Marine Rescue Middle Harbour 9969 3270
NSW Marine Rescue Terry Hills Radio 9450 2468



AMBULANCE PICK UP POINTS

A – Manly Wharf, Manly
B – Middle Harbour Yacht Club Marina, Mosman
C – Taronga Zoo Wharf, Mosman
D – Cremorne Point Wharf, Cremorne

E – Royal Sydney Yacht Squadron, Kirribilli
F – Man 'O' War Steps, Opera House
G – Cruising Yacht Club of Australia
H – Rose Bay Public Wharf, Rose Bay

Appendix "I"

Open Class Divisions 1, 2

(IRC & ORCi)

Sydney 38 Class Division 3

(OD)

1 Schedule of Races

- 1.1 The First Warning Signal will be made at 1155hrs on each day of racing.
 1.2 No Warning Signal will be made after 1530hrs on the last day of racing.
 1.3 A maximum of Six (6) Races are scheduled, a maximum of Four (4) Races may be sailed on each day of racing.

Date	Race No.	Course Area	Race Committee	Course Type	Time of 1st Warning Signal
Saturday 3rd March	1	Course Area "H"	CYCA 'OFFSHORE' VHF 73	W/L	1155hrs
	2				ASAP After Race 1
	3				ASAP After Race 2
Sunday 4th March	4	Course Area "H"	CYCA 'OFFSHORE' VHF 73	W/L	1155hrs
	5				ASAP After Race 4
	6				ASAP After Race 5

- 1.4 A notice will be posted by 1000hrs each day of racing to advise the location of the sailing area (Manly Circle, Macquarie Circle or Inshore). Notices will be posted on the website – [click here](#).
 1.5 In the event of adverse weather or sea conditions making conditions offshore unsuitable for racing, the Race Committee may move racing to Sydney Harbour. The Race Committee will Signal Code Flag 'L' and advise competitors on VHF.

2 Class Flags

Division	Class Flag
Division 1	Numeral Pennant 1
Division 2	Numeral Pennant 2
Sydney 38	Sydney 38 Insignia

3 Marks and Courses

3.1 Description of Marks

Marks	Description	
Start & Finish mark	Black and White inflatable buoy	
Mark 1 – windward mark for Division 1	Orange inflatable buoy	
Mark 2 – windward mark for Divisions 2 & 3	Yellow inflatable buoy	
Gate marks	Orange inflatable buoy	
Change of course marks	Division 1 only	Orange inflatable buoy with a black band
	Division 2 and 3 only	Yellow inflatable buoy with a black band

3.2 Description of Courses

The course to be sailed will be indicated by course board displayed from the Committee Vessel. Competitors are advised that a different course signal may be used for each Division.

Courses	Division	Description (All marks to Port)
1	1	START – 1 – FINISH
	2 and 3	START – 2 – FINISH
2	1	START – 1 – Gate – 1 – FINISH
	2 and 3	START – 2 – Gate – 2 – FINISH
3	1	START – 1 – Gate – 1 – Gate – 1 – FINISH
	2 and 3	START – 2 – Gate – 2 – Gate – 2 – FINISH
4	1	START – 1 – Gate – 1 – Gate – 1 – Gate – 1 – FINISH
	2 and 3	START – 2 – Gate – 2 – Gate – 2 – Gate – 2 – FINISH

3.3 The approx. magnetic bearing to the first mark may be displayed from the Committee Vessel prior to the start.

3.4 For all courses, boats shall sail between the Gate marks from the direction of the previous mark. If only one Gate mark is set, boats shall round the mark to port.

3.5 To change the next leg of the course, the Race Committee will lay a new mark (or move the finishing line) and remove the original mark as soon as practicable. When in a subsequent change a new mark is replaced, it will be replaced by an original mark.

4 The Start

Boats starting later than 5 minutes after her starting signal will be scored did not start (DNS), this changes RRS A4.1

For the first race of each day, the Open Class races will be started in the order of:

Division 1, then;

Division 2, then;

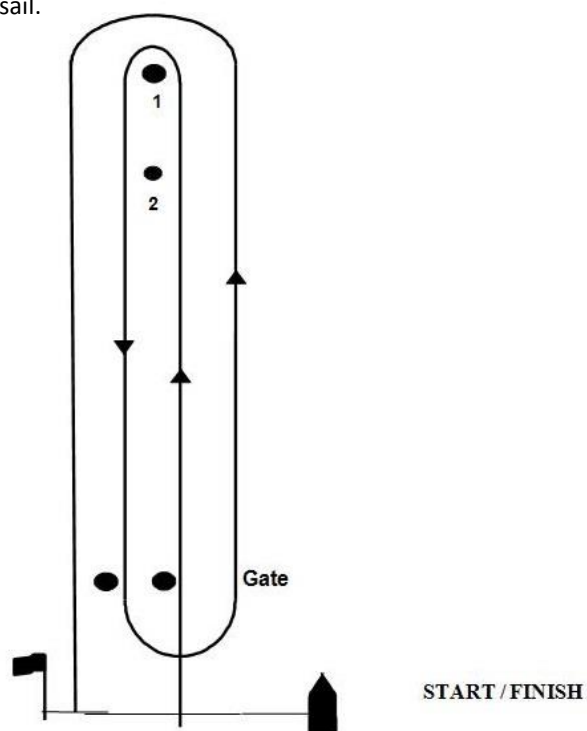
Division 3 (Sydney 38)

5 Time Limit

The time limit for all races will be two (2) hours from the Divisional starting signal. (Please note general sailing instruction 17).

6 Course Diagram

The diagram below shows the course to sail.



7 Alternative Harbour Marks and Courses

7.1 Description of Marks

Marks	Description	Marks	Description
CBN	AS Mark Chowder Bay North	MW	AS Mark Manly West
CBS	AS Mark Chowder Bay South	NP	AS Mark Nielsen Park
CP	AS Mark Cannae Point	OB	AS Mark Obelisk Bay
EC	AS Mark East Channel	RB	AS Mark Rose Bay
EB	AS Mark Edwards Beach	RP	AS Mark Rocky Point
GP	AS Mark Grotto Point	SM	AS Mark Shark Island
PP	AS Mark Point Piper	BB	AS Mark south of Sow & Pigs reef
LB	AS Mark Lady Bay	TB	AS Mark Taylors Bay
ME	AS Mark Manly East		

Marks	Description
AS MARKS	Yellow Spar Marks
START / FINISH	Black and White inflatable buoy

7.2 Description of Courses

The course to be sailed will be indicated by course board displayed from the Committee Vessel. Competitors are advised that a different course signal may be used for each Division.

Courses	Start Area	Description	Finish Area
5 (S)	North Harbour	Start – NP – MW – ME – NP – MW – ME – Finish	North Harbour
6 (S)	North Harbour	Start – SM – Shark Is - MW – ME – SM – Shark Is - MW – ME – Finish	North Harbour
7 (N)	Shark Island	Start – MW – ME – NP – MW – ME – Finish	Shark Island
8 (N)	Shark Island	Start – MW – ME – SM – Shark Is - MW – ME – SM – Shark Is - Finish	Shark Island

7.3 All Marks are to be rounded or passed to Starboard.

Appendix "II"

One Design & Sports Boat Classes

1 Course Areas and Classes

Course Area	Class	Race Committee	Approximate location	VHF Channel
Course Area C	Sports Boat inc M24s Int. J70 Class	RPAYC MV "Alfreds II"	Main Harbour – North	77
Course Area E	Adams 10 Class Cavalier 28 Class Int. Melges 20	MHYC / RPEYC MV "Hugh George"	Main Harbour – Sound	71

2 Schedule of Races

The First Warning Signal will be made at 1155hrs on each day of racing.

No Warning Signal will be made after 1530 hours on the last day of racing.

A maximum of Six (6) Races are scheduled, a maximum of Four (4) races may be sailed on each day of racing.

Date	Race No.	Course Area	Course Type	Time of 1st Warning Signal
Saturday 3rd March	Up to 4 races	Course Areas "C, & E"	W / L	1155hrs
Sunday 4th March	Up to 4 races	Course Areas "C, & E"	W / L	1155hrs

3 Class Flags

The order in which the Class Flags are listed below for each Course Area will also be the order of Start Sequence for the first race of each day.

Course Area	Class	Class Flag
Course Area C	Sports Boats (inc Melges 24) J70 Class	Int. Code Flag "D" Int. Code Flag "E"
Course Area E	Adams 10m Class Cavalier 28 Class Int. Melges 20	Int. Code Flag "F" Int. Code Flag "G" Int. Code Flag "J"

4 Marks and Courses

4.1 Description of Marks

Course Area	Start / Finish Marks	Course Marks	Change of course Marks
C	Black & White Inflatable	Mark 1 - Orange Mark 2 – Orange, white band Gate Marks - Orange	Mark 1 - Orange, black band Mark 2 – Yellow, black band
E	Yellow Inflatable with a black & white band	Mark 1 – Yellow, pink band Mark 2 – Orange, green band Gate Marks - Pink	Mark 1 - Yellow, black band Mark 2 – Orange, black band

4.2 Description of Courses

4.2.1 The course to be sailed will be indicated by course board displayed on the Starting Vessel or by numeral pennant displayed with the class flag. Competitors are advised that a different course signal may be used for each Class. Please note: If indicated by a course board, the course designation may be prefixed with the letter "W".

COURSE No.	W/L COURSE TO SAIL (All marks to Port except gate)
2	START - 1 - Gate - 1 – FINISH
3	START – 1 – Gate – 1 – Gate – 1 – FINISH
5	START – 2 – Gate – 2 – FINISH
6	START – 2 – Gate – 2 – Gate – 2 – FINISH

4.2.2 The approx. magnetic bearing to the first mark may be displayed from the Race Committee Vessel prior to the start.

- 4.2.3 For all W/L courses, boats shall sail between the Gate marks from the direction of the previous mark. If only one Gate mark is set, boats shall round the mark to port.
- 4.2.4 To change the next leg of the course, the race committee will lay a new mark (or move the finishing line) and remove the original mark as soon as practicable. When in a subsequent change a new mark is replaced, it will be replaced by an original mark.
- 4.3 The race committee may lay an offset mark approximately 50 metres to port of Mark 1, and if laid boats shall round the offset mark after rounding Mark 1. In the case of a change of course is required, the offset mark will not be laid.
- 4.4 At the discretion of the race committee, Mark 2 may not be laid.

5 The Start

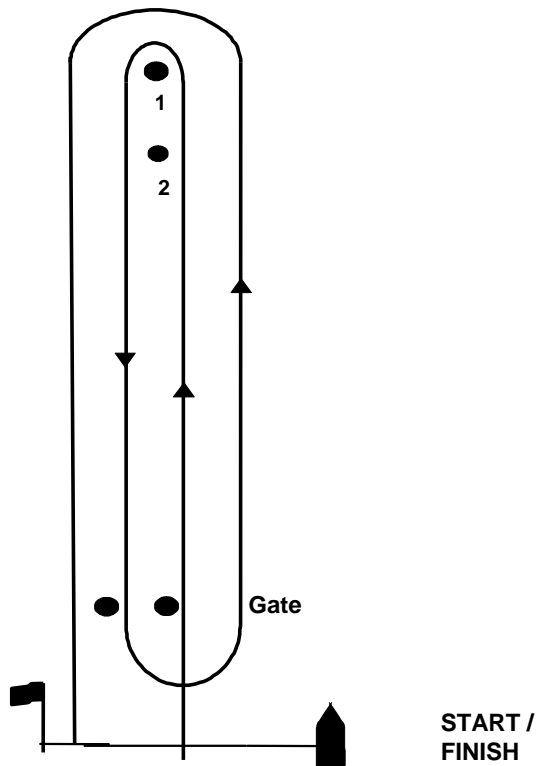
Boats starting later than 5 minutes after her starting signal will be scored did not start (DNS).
This changes RRS A4.1.

6 Time Limit

The time limit for all races will be 90 minutes from the Class starting signal. (Please note general sailing instruction 17).

7 Course Diagram

The diagram below shows the course to sail.



Appendix “III”

Int. Etchells

Int. Yngling

1 Course Areas and Classes

Course Area	Class	Race Committee	Approximate location	VHF Channel
Course Area B	Int. Etchells Class Int. Yngling Class	RSYS MV “Mischief”	Main Harbour - Mid	74

2 Schedule of Races and Sailing Instructions

- The First Scheduled Warning Signal is at 1155hrs on each day of racing.
- No Warning Signal will be made after 1530 hours on the last day of racing.
- A maximum of *Six* (6) Races are scheduled for the Dragon, 5.5m and Yngling Classes with a maximum of *Three* (3) races sailed each day.
- A maximum of *Three* (3) Races are scheduled for the Etchells Class.
- The Dragon and 5.5m Classes shall compete as one Division.
- All Yachts competing on Course Area B shall sail under the RSYS Mini Regatta sailing instructions available here; https://www.rsys.com.au/images/Sailing/2017_Season/RSYS1718_MINI.pdf

Date	Race No.	Course Area	Course Type	Time of 1st Warning Signal
Saturday 3 rd March	Up to 3 races	Course Area B	W / L	1155hrs
Saturday 3 rd March	Up to 3 races	Course Area B	W / L	1330hrs (Etchells)
Sunday 4 th March	Up to 3 races	Course Area B	W / L	1155hrs

3 Class Flags

The order in which the Class Flags are listed below will also be the order of Start Sequence for the first race of each day.

Course Area	Class	Class Flag
Course Area B	International Etchells Class International Yngling Class	Etchells Class Insignia Yngling Class Insignia

4 Marks

Description of Marks

Course Area	Start / Finish Marks	Course Marks	Change of course Marks
B	Black & White Inflatable	Yellow Inflatables with the initials RSYS	Yellow Inflatables with a black band

Appendix “IV”

Super 12 Class

Super 30 Class

Cruiser Racer Class

1 Schedule of Races

The First Warning Signal will be made at 1155hrs on each day of racing, for Course Areas “D”
No Warning Signal will be made after 1530 hours on the last day of racing, for Course Area “D”

- For the Super 12 Class - A maximum of Five (5) Races are scheduled, a maximum of Two (3) races may be sailed on each day of racing.
- For the Super 30 Class - A maximum of Four (4) Races are scheduled, a maximum of Two (2) races may be sailed on each day of racing.
- For the Cruiser-Racer Class - A maximum of Two (2) Races are scheduled.

Date	Race No.	Course Area	Race Committee	Course Type	Time of 1st Warning Signal
Saturday 3rd March All Classes	1	Course Area “D”	SASC MV “CAPTAIN AMORA” VHF 72	W/L	1155hrs
	2				ASAP After Race 1
	3 (Super 12 Only)				ASAP After Race 2 Note: Super 12 Only
Sunday 4th March Super 12 & Super 30	4 (Super 30 #3)	Course Area “D”	SASC MV “CAPTAIN AMORA” VHF 72	Harbour	1155hrs
	5 (Super 30 #4)				ASAP After Race 4

2 Class Flags

The order in which the Class Flags are listed below for each Course Area will also be the order of Start Sequence for the first race of each day.

Course Area	Class	Class Flag
Course Area D	Super 12 Class	Int. Code Flag “K”
	Super 30 Class	Int. Code Flag “T”
	Cruiser Racer Class	Int. Code Flag “V”

3 Marks and Courses

3.1 Description of Marks – Windward / Leeward

Course Area	Start / Finish Marks	Course Marks	Change of course Marks
Course Area D	Orange Inflatable with SASC Markings	Mark 1 - Orange Inflatable Mark 2 - White inflatable Gates - Orange & White	Mark 1 - Orange – Black Band Mark 2 - White – Black Band

3.2 Description of Courses – Windward / Leeward

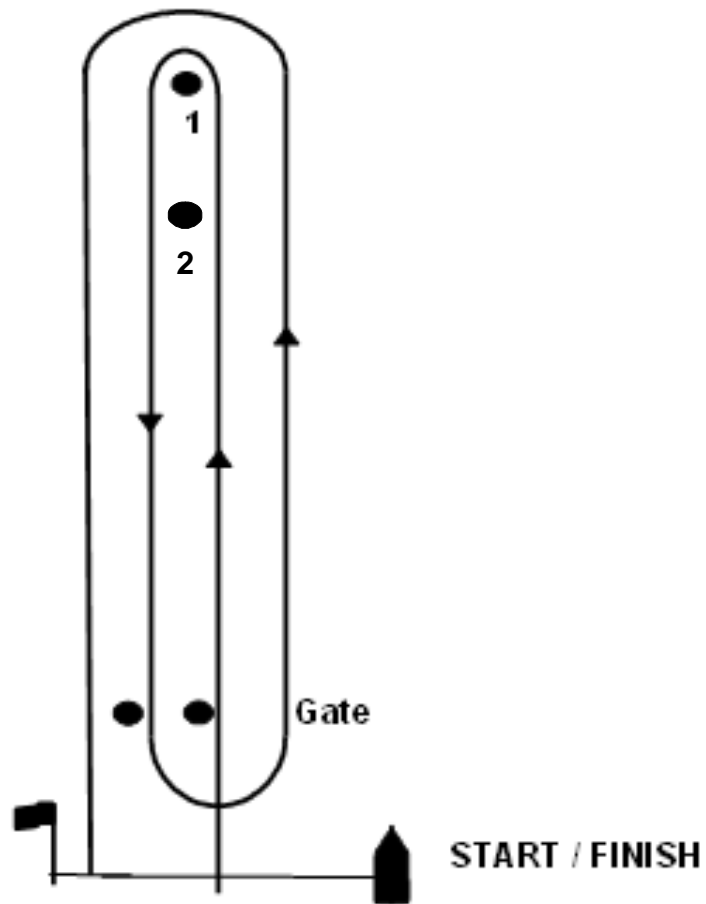
The course to be sailed will be indicated by course board displayed on the Starting Vessel or by numeral pennant displayed with the class flag.

Competitors are advised that a different course signal may be used for each Class.

Please note: If indicated by a course board, the course designation may be prefixed with the letter “W”.

Courses	Description (All marks to Port except Gate)
1	START – 1 – FINISH
2	START – 1 – Gate – 1 – FINISH
3	START – 1 – Gate – 1 – Gate – 1- FINISH
4	START – 2 – FINISH
5	START – 2 – Gate – 2 – FINISH
6	START – 2 – Gate – 2 – Gate – 2- FINISH

- 3.3 The approx. magnetic bearing to the first mark may be displayed from the Race Committee Vessel prior to the start.
- 3.4 For all courses, boats shall sail between the Gate marks from the direction of the previous mark. If only one Gate mark is set, boats shall round the mark to port.
- 3.5 To change the next leg of the course, the race committee will lay a new mark (or move the finishing line) and remove the original mark as soon as practicable. When in a subsequent change, a new mark is replaced, it will be replaced by an original mark.
- 3.6 The race committee may lay an offset mark approximately 50 metres to port of Mark 1, and if laid boats shall round the offset mark after rounding Mark 1. If a change of course is required, an offset mark may not be laid.
- 3.7 **Course Diagram**
The diagram below shows the windward-leeward course to sail.



3.8 Description of Marks – Harbour Courses

Marks	Description	Marks	Description
CBN	AS Mark Chowder Bay North	NP	AS Mark Nielsen Park
EC	AS Mark East Channel	N2	Naval Buoy 2 (approx. 150m NW of Clarke Is.)
KP	Kirribilli Point (SASC Inflatable - White)	RB	AS Mark Rose Bay
LB	AS Mark Lady Bay	SM	AS Shark Island Mark
TB	AS Mark Taylor Bay		

Marks	Description
AS MARKS	Yellow Spar Marks
START / FINISH	Orange Inflatable with SASC Markings
SASC INFLATABLE	White Inflatable (SASC)

3.9 Description of Courses - Harbour

The course to be sailed will be indicated by course board displayed on the Starting Vessel or by numeral pennant displayed with the class flag.

Competitors are advised that a different course signal may be used for each Class.

Please note: If indicated by a course board, the course designation may be prefixed with the letter "W".

Courses	Start Area	Description (All marks to Starboard unless indicated)	Finish Area
1 (N/NE)	West of Clarke Island	Start – LB – SM – EC - Finish	Clarke Island
2 (W/NW)	West of Shark Island	Start – KP(P)- RB – CBN – SM – Finish	Shark Island
3 (SE)	South of Shell Cove	Start – RB – KP(P) – SM – PP - Finish	South of Shell Cove
4 (E)	West of Clarke Island	Start – RB – KP – SM – Finish	Clarke Island
5 (S/SW/SSE)	Athol Bight	Start – N2(P) – CBN – PP-TB- SM – Finish	Athol Bight
6 (W / NW)	West of Shark Island	Start – KP (P) – SM – KP(P) – Finish	Shark Island

4 **The Start**

Boats starting later than 5 minutes after her starting signal will be scored did not start (DNS). This changes RRS A4.1.

5 **Time Limit**

The time limit for all races will be 90 minutes from the Class starting signal. (Please note general sailing instruction 17).

6 **Course Chartlet**

The Course Chartlet in Appendix VIII shows the approximate location of marks.

Appendix “V”

Performance Class (Spinnaker) Divisions 1, 2 & 3

1 Schedule of Races

The First Warning Signal will be made at 1155hrs on each day of racing.

No Warning Signal will be made after 1530 hours on the last day of racing.

A maximum of Four (4) Races are scheduled, a maximum of Two (2) races may be sailed on each day of racing.

Date	Race No.	Course Area	Race Committee	Course Type	Time of 1st Warning Signal
Saturday 3rd March	1	Course Area “F”	MHYC MV LEAH TASH VHF 72	Combination Laid & Fixed Marks Race	1155hrs
	2				ASAP After Race 1
Sunday 4th March	3	Course Area “F”	MHYC MV LEAH TASH VHF 72	Combination Laid & Fixed Marks Race	1155hrs
	4				ASAP After Race 3

2 Class Flags

Division	Class Flag
Division 1 (includes X-Yachts)	Int. Code Flag “O”
Division 2	Int. Code Flag “R”
Division 3	Int. Code Flag “Q”

3 Marks and Courses

3.1 Description of Marks

Marks	Description	Marks	Description
CBN	AS Mark Chowder Bay North	NP	AS Mark Nielsen Park
CBS	AS Mark Chowder Bay South	OB	AS Mark Obelisk Bay
CP	AS Mark Cannae Point	RB	AS Mark Rose Bay
EC	AS Mark East Channel	RP	AS Mark Rocky Point
EB	AS Mark Edwards Beach	SM	AS Mark Shark Island
GP	AS Mark Grotto Point	BB	AS Mark south of Sow & Pigs reef
PP	AS Mark Point Piper	TB	AS Mark Taylors Bay
LB	AS Mark Lady Bay	MHNH	MHYC Mark North Head Laid Mark
ME	AS Mark Manly East		
MW	AS Mark Manly West		

Marks	Description
AS MARKS	Yellow Spar Marks
START / FINISH	Orange Inflatable with Black & White Band
MHYC Marks	Yellow with a White Band

3.2 Description of Courses

The course to be sailed will be indicated by course board displayed on the Starting Vessel or by numeral pennant displayed with the class flag.

Competitors are advised that a different course signal may be used for each Class.

Please note: If indicated by a course board, the course designation may be prefixed with the letter "C".

The approximate bearing to the first top mark may be displayed from the Committee Vessel.

Courses for Divisions: 1, 2 & 3

Courses	Start Area	Description	Finish Area
1 (N)	Camp Cove	Start – MW – ME – EC – MW(*) – ME(*) – Finish	Camp Cove
2 (NNE)	Hunters Bay	Start – MW – ME – CBN – MW(*) – ME(*) – Finish	Hunters Bay
3 (NE)	Hunters Bay	Start – CP – EC – CBN – CP – CBN(*) – Finish	Hunters Bay
4 (E)	Hunters Bay / Grotto Point	Start – MHNH(P) – RP – EB – MHNH(P)(*) – Finish	Hunters Bay / Grotto Point
5 (SE)	Hunters Bay / Grotto Point	Start – EC – RB – OB – NP(*) – Finish	Hunters Bay / Grotto Point
6 (S)	North Harbour	Start – RB – OB – RB(*) – Finish	North Harbour
7 (SW)	Spring Cove / Cannae Point	Start – EB – CP – EB – CP(*) – EB(*) – Finish	Spring Cove / Cannae Point
8 (W)	Spring Cove / Cannae Point	Start – EB – MHNH – EB – MHNH(*) – EB(*) – Finish	Spring Cove / Cannae Point
9 (NW)	Camp Cove	Start – GP – CP – NP – CBN(*) – MHNH(P)(*) – GP(*) – Finish	Camp Cove

3.3 All Marks are to be rounded or passed to Starboard except those suffixed with the letter (P) which shall be rounded or passed to Port.

3.4 If Code Flag S is displayed with the warning signal, boats shall omit marks suffixed (*).

4 **The Start**

Boats starting later than 5 minutes after her starting signal will be scored did not start (DNS). This changes RRS A4.1.

For the first race of each day, races will be started in the order of:

- Division 1
- Division 2
- Division 3

5 **Time Limit**

The time limit for all races will be 2.5 hours from the Divisional starting signal.
(Please note general Sailing Instruction 17).

6 **Course Chartlet**

The Course Chartlet in Appendix VIII shows the approximate location of marks.

Appendix “VI”

Performance Class (Non-Spinnaker) Divisions 1 & 2

1 Schedule of Races

The First Warning Signal will be made at 1155hrs on each day of racing.

No Warning Signal will be made after 1530 hours on the last day of racing.

A maximum of Four (4) Races are scheduled; a maximum of Two (2) races may be sailed on each day of racing.

Date	Race No.	Course Area	Race Committee	Course Type	Time of 1st Warning Signal
Saturday 4th March	1	Course Area “G”	RANSA MV ‘RANSA I’ VHF 73	Harbour	1155hrs
	2				ASAP After Race 1
Sunday 5th March	3	Course Area “G”	RANSA MV ‘RANSA I’ VHF 73	Harbour	1155hrs
	4				ASAP After Race 3

2 Class Flags

Division	Class Flag
Division 1	Numeral Pennant “1”
Division 2	Numeral Pennant “2”

3 Marks and Courses

3.1 Description of Marks

Marks	Description
A	Fort Denison
CBS	AS Mark Chowder Bay South
EC	AS Mark Eastern Chanel (approx. 100m west of Eastern Channel Pile Light)
N2	Naval Buoy No.2 (approx. 200m North-West of Clarke Island)
N3	Naval Buoy No.3 (approx. 200m North of Clarke Island)
NP	AS Mark Neilson Park (South West of Neilson Park Beach)
PP	AS Mark Point Piper (North of Point Piper)
RB	AS Mark Rose Bay Mark (approx. 200m off the eastern shore of Rose Bay in front of the Convent)
SM	AS Mark Shark – (approx. 10 metres South East of the South Cardinal Mark, off Shark Island, passing both the light of Shark Island and Shark Island to Starboard)
TB	AS Mark Taylor Bay Mark (Taylor Bay)

Marks	Description
AS MARKS	Yellow Spar Marks (YNSW)
START / FINISH	Orange Inflatable (RANSA)

3.2 Description of Courses

The course to be sailed will be indicated by the display of an International Code Flag.

Competitors are advised that a different course signal may be used for each Division.

Courses	Start Area	Description	Finish Area
A (NE)	Clark Island	Start – EC – PP – NP – Finish	Clark Island
B (W)	Clark Island	Start – A(P) – PP – N3 – SM – Finish	Clark Island
C (S)	Athol Bight	Start – N2(P) – CBS – PP – N2 – Finish	Athol Bight
D (SE)	Athol Bight	Start – RB – PP – TB – SM – N2 – Finish	Athol Bight
E (E)	Neutral Bay	Start – SM – PP – N2 – SM – N2 – Finish	Neutral Bay
F (N)	Clark Island	Start – CBS – PP – TB – SM – Finish	Clark Island

- 3.3 All Marks are to be rounded or passed to Starboard except those suffixed with the letter (P) which shall be rounded or passed to Port.
- 4 The Start**
Boats starting later than 5 minutes after her starting signal will be scored did not start (DNS). This changes RRS A4.1.
The Performance Class (Non-Spinnaker) races will be started in the order of:
- Division 1
 - Division 2
- 5 Time Limit**
The time limit for all races will be 2 hours from the Divisional starting signal.
(Please note general Sailing Instruction 17).
- 6 Course Chartlet**
The Course Chartlet in Appendix VIII shows the approximate location of marks.

Appendix “VII” Historic 18’ Skiffs

1 Schedule of Races

The Warning Signal will be made at 1414hrs.

No Warning Signal will be made after 1600 hours on the last day of racing.

A maximum of One (1) Race is scheduled.

Date	Race No.	Course Area	Race Committee	Course Type	Time of 1st Warning Signal
Saturday 4th March	1	Course Area “A”	SFS MV ‘KILARA II’ VHF 73	Harbour	1414hrs

2 Class Flags

Class	Class Flag
Historic 18’ Skiffs	Historic Flag

3 Marks and Courses

3.1 Description of Marks

Start and Finish Marks	Course Marks
Flag Marks	Flag Marks and YNSW Yellow spar marks

3.2 Description of Courses

The Course(s) to be sailed are as detailed in the Sydney Flying Squadron Historic 18’ Skiff Club Series Sailing Instructions.

4 The Start

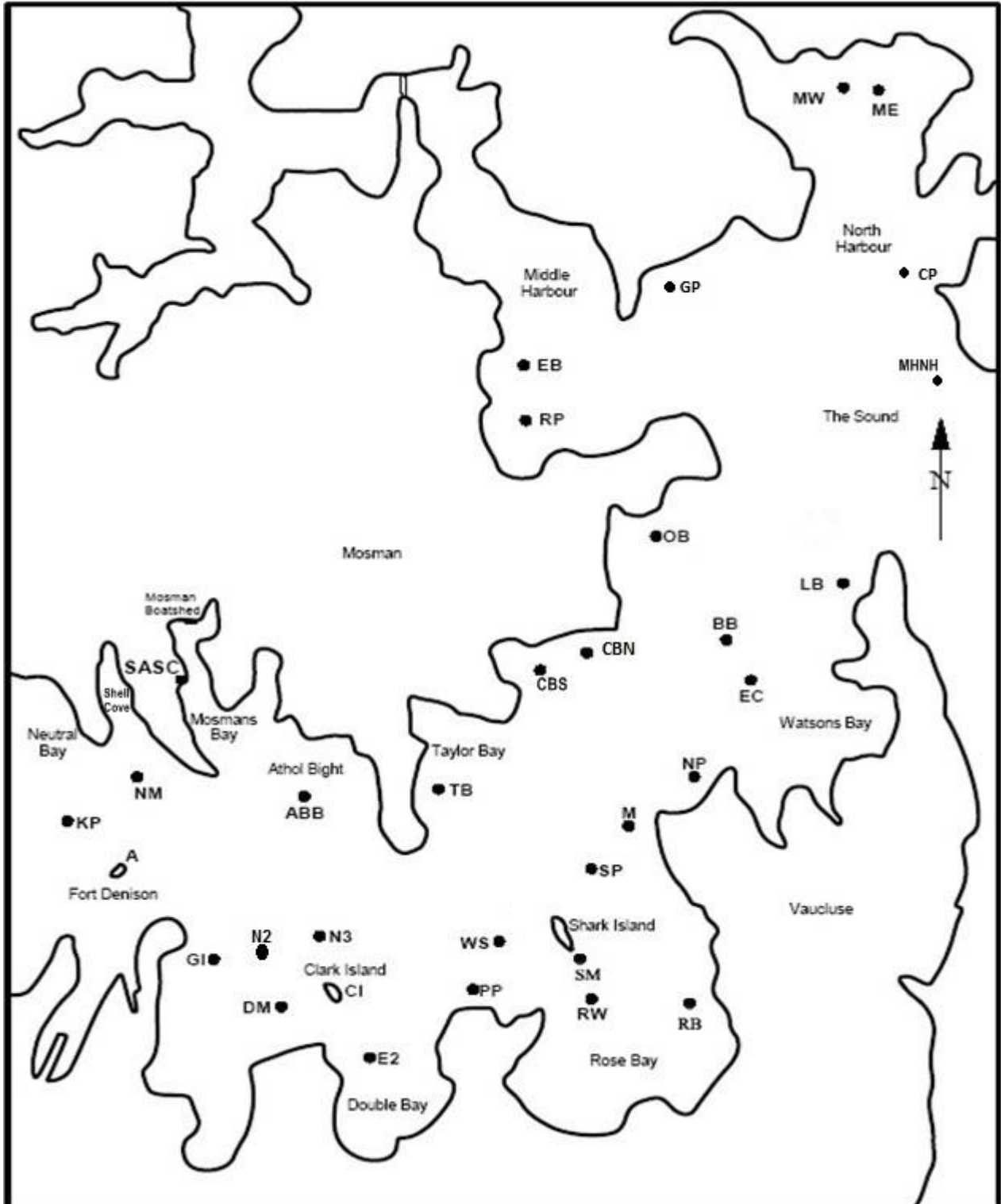
Boats starting later than 5 minutes after her starting signal will be scored did not start (DNS). This changes RRS A4.1.

5 Time Limit

The time limit for all races will be 180 minutes from the Class starting signal. (Please note general sailing instruction 17).

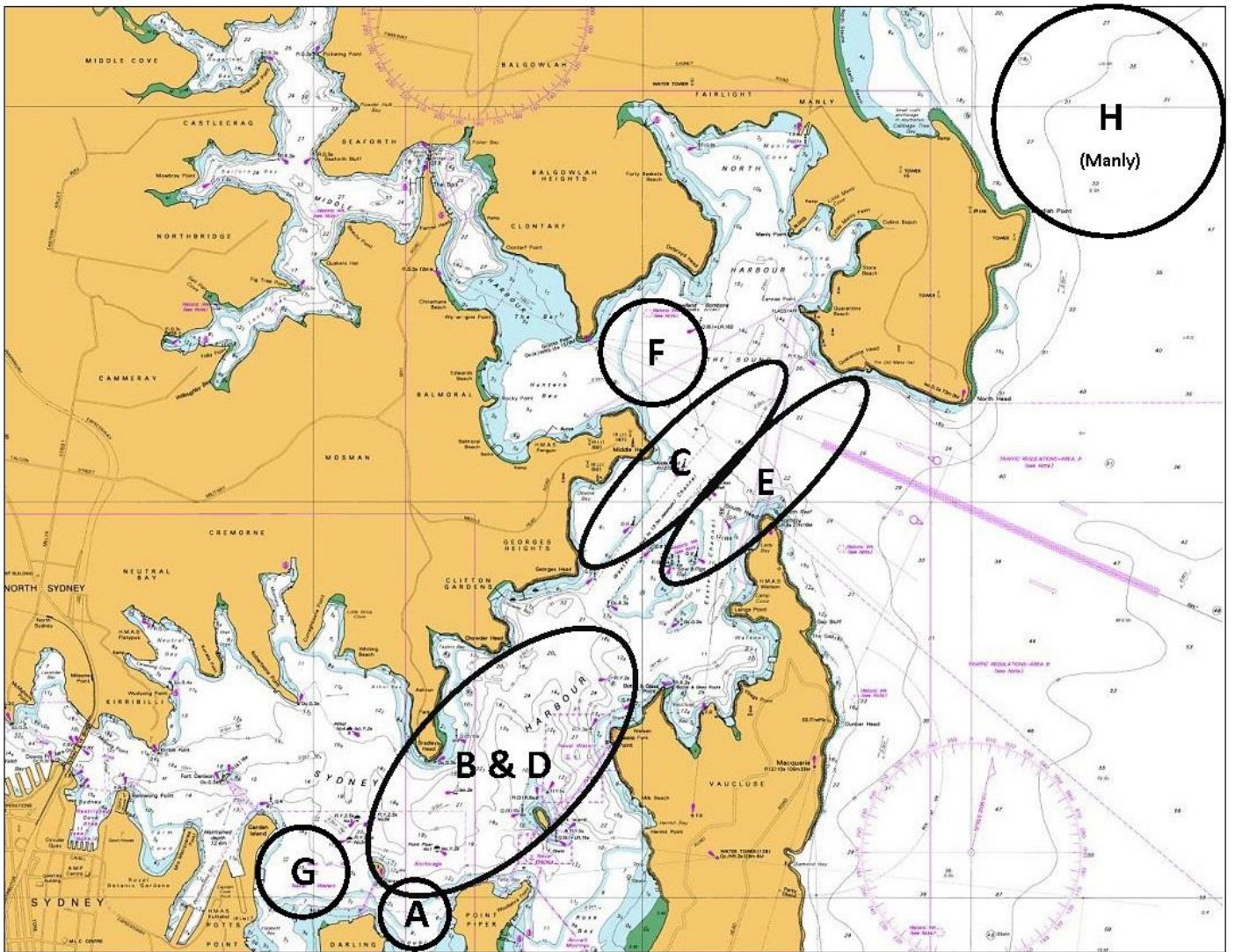
Appendix "VIII"

SYDNEY HARBOUR MARKS



Appendix "IX"

Typical North Easterly Course Areas



Appendix "IX"

Typical South Easterly Course Area

