
80 /  MIDDLE HARBOUR YACHT CLUB
1939 - 2019
ANNIVERSARY

— 2019 —

SYDNEY HARBOUR

REGATTA

Friday 1st, Saturday 2nd & Sunday 3rd March 2019

SAILING INSTRUCTIONS

for the

YOTI 2019 Sydney 38 OD Australian Championship

SPONSORED BY...



GENERAL SAILING INSTRUCTIONS

Middle Harbour Yacht Club (MHYC) as the Organising Authority, will conduct the Sydney Harbour Regatta and YOTI 2019 Sydney 38 OD Australian Championship on the waters of Sydney Harbour and the nearby Tasman Sea on Friday 1st, Saturday 2nd and Sunday 3rd March 2019. Further instructions for each Class or Division are detailed in each Series Appendix, which forms part of the Sailing Instructions.

1 RULES

- 1.1 The Sydney Harbour Regatta will be governed by the following;
- the rules as defined in The Racing Rules of Sailing,
 - the Special Regulations of Australian Sailing (AS), and
 - the current IRC Rules, Parts A, B and C (if applicable),
 - the Regulations of NSW Roads and Maritime Services in regards to Ships and Ferries exclusion zones, except as any of these are modified by these Sailing Instructions.
- 1.2 At the discretion of the Organising Authority, a Class or Division with less than six (6) eligible entries may be abandoned or combined with another class or division.
- 1.3.1 A National Jury has been approved by Australian Sailing. The Jury will hear all protests and requests for redress, in accordance with Australian Sailing Addendum A to the RRS. The decision of the National Jury will be final and not subject to appeal, as provided in RRS 70.5.
- 1.3.2 For protests involving an alleged breach of the rules of Part 2 of the RRS, an arbitration hearing may be held prior to a protest hearing in accordance with RRS Appendix T.
- 1.3.3 For all Classes, scoring penalties shall apply at the discretion of the Jury.
- 1.3.4 The Jury may go afloat to observe racing. Whilst afloat the jury may sound a whistle to indicate they have observed a racing incident.
- 1.4 The following Racing Rules of Sailing (RRS) will be amended:
- RRS 41: Is changed that, 'whilst racing a boat may retrieve data from any page of the Event or MHYC Websites, even if that page is not publicly available.'
 - RRS 44.1: Is changed that 'only a one (1) turn penalty, including one (1) tack and one (1) gybe is required, except for infringements that occur within the "zone" of a rounding mark.'
 - RRS 51: Subject to NoR 1.2.2, a boat with movable or variable ballast (within the meaning of those terms in the Special Regulations) may move that ballast for the purpose of changing trim or stability.
 - RRS 78.2: Where required, valid Rating / Class certificates shall be produced by the due date specified in this Notice of Race.
 - RRS35, A4.2 and A5: Are amended so that boats still racing at the expiration of the race time limit will be scored points equal to the number of boats finishing within the time limit plus a score of 30% of the number of starters rounded to the nearest whole number, but no more points than the number of starters. Such boats will be scored time limit expired (TLE).
- 1.5 Unless in use, no part of any anchor may project forward of the bow at any time whilst racing. Anchors which are stowed as an integral part of the bowsprit and whose shaft is secured within a slot on the bow are permitted.
- 1.6 Special Regulations:
The following Australian Sailing Special Regulations Categories will apply:

CLASS (SERIES)	AS SPECIAL REGULATIONS
Sydney 38 Class	Part 1 Category 4

- 1.7 The Race Committee may inspect any boat at any time for Special Regulation and Class rule compliance. Any alleged breaches may be protested by the race committee only.
- 1.8 Competing boats shall report to their Course Area Race Committee Vessel, with mainsail hoisted on starboard tack, prior to the warning signal of the first race of each day of racing to confirm their intention to compete. Boats which cannot be identified prior to their warning signal may be scored as DNS.
- 1.9 Competing boats which retire from racing shall advise their Course Area Race Committee Vessel at the earliest opportunity or contact the MHYC Sailing Office in person or by phone (02) 9969 1244.

2 ELIGIBILITY

Eligibility is in accordance with the YOTI 2019 Sydney 38 OD Australian Championship Supplementary Notice of Race and the 2019 Sydney Harbour Regatta Notice of Race.

3 NOTICES TO COMPETITORS

Notices will be posted online at www.shr.mhyc.com.au/racing/notices-to-competitors.html. Printed copies of the notices may also be posted on the noticeboard located in the Breezeway at Middle Harbour Yacht Club or on the noticeboards of participating clubs.

4 CHANGES IN SAILING INSTRUCTIONS

- 4.1 Any changes to Sailing Instructions will be posted on the Official Notice Board at least 2 hours before the scheduled start time of the first race for which they will take effect.
- 4.2 Any changes to Sailing Instructions made afloat will be indicated by the display of the 3rd Substitute accompanied by two sound signals. The change will be communicated verbally on the designated course VHF Channel and/or displayed on the Course Area Race Committee Vessel.
- 4.3 Changes to the schedule of races will be posted on the Official Notice Board before 2000hrs on the day preceding the race concerned.

5 RADIO COMMUNICATION

- 5.1 The Race Committee may broadcast the course to be sailed, names/sail numbers of OCS boats, and/or other information of interest to competitors on the appropriate course VHF channel. Any failure of, or defect in, such a broadcast will not be grounds for redress. This alters RRS 60.1 and 62.
- 5.2 A boat shall neither make radio transmissions whilst racing nor receive radio communications not available to all boats. This restriction also applies to mobile telephones.

6 SIGNALS

- 6.1 Signals made ashore will be displayed from the MHYC flagstaff located on the North Eastern perimeter of the Club House (Starters Box).
- 6.2 Code Flag AP with two sounds (one sound when lowered) means "Racing is postponed. The warning signal will be made not less than 60 minutes after AP is lowered".

7 SCHEDULE OF RACES

Please refer to Class / Division Sailing Instruction Appendix for further detail.

CLASSES/ DIVISIONS	APPENDIX	COURSE AREA	RACE COMMITTEE	VHF	FRIDAY 1	SAT 2	SUN 3
Sydney 38	II	H	MHYC	74	3 x W/L	3 x W/L	3 x W/L
LEGEND							
W/L – Offshore Windward Leeward / Laid Marks Courses							

8 THE START LINE

The starting line will be between a signal mast displaying an Orange Flag on the Race Committee Vessel and a port end starting mark.

9 THE FINISH LINE

- 9.1 The finishing line will be between a signal mast displaying a Blue Flag on the Race Committee vessel and a nearby finishing mark.
- 9.2 Boats shall not pass through the 'Finish Line' when in use, except when finishing. Boats failing to comply with this may be protested by the Race Committee only.

10 EVENT ADVERTISING

- 10.1 While racing, all boats shall display the Helly Hansen and Clean Up Sydney Harbour backstay flags provided in the skipper packs.
- 10.2 All boats shall display the YOTI bow decal for the duration of the regatta. Decals shall be applied in accordance with the instructions provided by the Organising Authority.
- 10.3 When practicable, the Sydney 38 Class Flag shall be flown from the forestay transiting to the course area and when returning to the marina.

11 OFFICIAL VESSELS

Official boats may be identified as follows:

Race Committee Vessels may display a Course Area flag together with the conducting Clubs burgee or flag. Mark boats may display the conducting Clubs burgee or flag.

12 PROTEST AND REQUEST FOR REDRESS

- 12.1 Protests shall be lodged at the MHYC Office within 90 minutes of the finish time of the last boat in the protesting boat's Class or Division in the last race of the day. Protest forms are available from the MHYC Regatta Office or online on the event website. Protests may be lodged in person or by email to sailing@mhyc.com.au.
- 12.2 Notification of the details of protest hearings will be placed on the Official Notice Board as soon as possible to inform competitors when there is a hearing in which they are parties to a protest or named as a witness. All hearings shall take place in the Quarterdeck at MHYC. These notices are deemed to fulfil the requirements of RRS 63.2. Representatives of boats, who are parties to hearings, and their witnesses, are advised to remain on call in the vicinity of the MHYC (or any other place as directed by the jury).
- 12.3 RRS 66 is changed by adding: "on her last day of racing, a party to the hearing may ask for a reopening no later than half an hour after being informed of the decision."
- 12.4 In accordance with RRS 64.1, for a breach of a rule of RRS Part 2, the Jury may award a disqualification or a scoring penalty. For all other rules the penalty shall be at the discretion of the Jury which may include no penalty.

13 ARBITRATION

- 13.1 For protests involving an alleged breach of the rules of Part 2 of the RRS, an arbitration hearing may be held prior to a protest hearing in accordance with RRS Appendix T.
- 13.2 The arbitrator may be a member of any subsequent jury or may observe and give testimony to the jury. This changes RRS 63.3(a).

14 RESULTS

Results will be posted to the event website at www.shr.mhyc.com.au.
Results may be posted on the Regatta results boards as soon as practicable after the last yacht in each class finishes the last race each day. The Regatta results board will be located on the beachfront walkway at MHYC.

15 SCORING SYSTEM

- 15.1 The "Low Point System" RRS Appendix A will apply except there shall be no discards and a boat's total score will be the sum of her scores in all races completed.
- 15.2 Number of scheduled races, number of races required for a Series and Handicap System are as follows:

CLASS (SERIES)	RACES SCHEDULED	REQ'D FOR SERIES	HANDICAP SYSTEM
Sydney 38 One Design Australian Championship (Fri-Sun)	9	3	OD
Sydney Harbour Regatta - Sydney 38 Division (Sat-Sun)	6	2	OD

16 ALTERNATIVE PENALTIES

RRS 44.1 is changed so that a one (1) turn penalty, including one (1) tack and one (1) gybe is required, except for infringements that occur within the "zone" of a rounding mark.

17 HANDICAPS

- One Design Classes; Adams 10, Int. J70, Int. Yngling, Int. Etchells and Sydney 38 will have no handicap and will be scored on elapsed time (One Design).
- Event Handicaps (EHC) will be supplied by the Regatta Handicap Committee.
- Performance based handicaps (PHS) including event handicaps (EHC) may be adjusted at any time during the regatta.
- The decision of the Race Committee or their representative on any handicap matter will be final and will not be grounds for requests for redress. This alters RRS 60.1 (b).

18 COURSE AREAS

Course Areas as shown in Appendix IX are approximate only and may be changed by the Organising Authority.

19 SUPPORT BOATS

- 19.1 Team leaders, coaches and other support personnel shall not be in the racing area from the time of the preparatory signal until all boats have finished or the Race Committee signals a postponement, general recall or abandonment.
- 19.2 The penalty for failing to comply with this requirement may be disqualification of all boats associated with the support personnel who do so.

20 HAUL OUT RESTRICTIONS AND PLASTIC POOLS

There shall be no restriction on the use of plastic pools or haul out of boats or the use of underwater breathing apparatus under boats during the Sydney Harbour Regatta.

21 PRIZES

- 21.1 The Official Presentation and Prize Giving for the YOTI 2019 Sydney 38 OD Australian Championship will be held at approximately **1900hrs on Sunday 3 March 2019**, at the Middle Harbour Yacht Club. Prizes may be awarded in accordance with Supplementary NOR 4.
- 21.1 The Official Presentation and Prize Giving for the Sydney Harbour Regatta (for races held on March 2 & 3) will be held at **1900hrs on Monday 4 March 2019**, at the Middle Harbour Yacht Club. Prizes may be awarded to the overall winners (1st) and place getters (2nd and 3rd) in each Class or Division consisting of six (6) or more entrants. Additional Sponsor Prizes may also be awarded. All competitors are invited to attend.
- 21.2 Grand Prizes offered by the Organising Authority and Event Sponsors will be drawn at the Official Presentation. Details, terms and conditions have been published in a Notice to Competitors published on the event website.
- 21.3 The Organising Authority will offer a winning boat's registered Club the opportunity to display Perpetual Trophies at their registered Club. This will be subject to the completion of the engraving of the winning boat's name and held until one (1) month prior to the next Sydney Harbour Regatta. Where a registered Club declines this offer, Perpetual Trophies will be held on display by the Organising Authority.

22 DISCLAIMER OF LIABILITY

- 22.1 All those taking part in races conducted by the Organising Authority do so at their own risk and responsibility.
- 22.2 The Organising Authority is not responsible for the seaworthiness of a yacht whose entry is accepted or the sufficiency or adequacy of its equipment.
- 22.3 The Organising Authority is not responsible for any damage or injury, either ashore or at sea to persons or yachts which might result from participating in races conducted by the club.
- 22.4 Attention is drawn to ISAF fundamental rule 4: decision to race: ***"the responsibility for a boat's decision to participate in a race or to continue racing is hers alone"***.

23 MEDIA

With the consent of the Organising Authority, a boat may carry on board a Media Representative for the purposes of photography, filming, sound recording and journalism and who shall not participate in the sailing or navigation of the boat. Such media representative shall be exempt from the boat's compliance with its Class Rules in respect of Crew Numbers and Crew Weight.

24 CARDINAL MARKS AND FERRIES AND COMMERCIAL SHIPPING

24.1 Cardinal Marks

Boats shall pass on the safe water side of all Sydney Harbour Cardinal Marks.

Boats shall not sail in the following prohibited areas:

- The area bounded by imaginary lines projected from the shore joining the West, South and East Cardinal Marks surrounding Gowlland Bombora.
- The area bounded by imaginary lines joining the North, East, South and West Cardinal Marks surrounding Sow and Pigs Reef.
- The area between AS Mark Shark Island and the South Cardinal Mark Shark Island.

For the purpose of RRS 18 and 19, all Cardinal Marks surrounding the Gowlland Bombora and the Sow and Pigs Reef and all imaginary straight lines projected between such marks, shall be deemed obstructions.

24.2 Ferries and Commercial Shipping

Boats shall not interfere with the Commercial or Defence Shipping of the Port and shall not approach closer than 30m on either side or astern or 500m ahead of any commercial ship and pass ferries clear at least 200m from the bow and 30m either side or astern. Refer to Illustration of Ferry and Ship Activated Exclusion Zone.

Commercial ships and ferries may be escorted by a NSW Roads and Maritime Services vessel. Competing boats shall not obstruct these escort vessels, cause it/them to move station or collide with them. Competing boats shall obey all instructions of the escort vessel and shall not pass between the ship being escorted and the escort vessel. Complying with an instruction of an escort vessel shall not be grounds for redress under RRS 62.

- 24.3 Any boat observed by the Race Committee to breach the requirements of SI25 or against whom a complaint is received from NSW Roads and Maritime Services, Sydney Ports, Harbour City Ferries, or the Master of a commercial or recreational vessel may be subject to action by the Race Committee or Protest Committee under RRS Part 5, Section A.

Yacht Person's Brief

1. Be Safe!
2. Observe NSW Collision regulations and in particular Rule 1 (b) and Rule 2(a) (b) ie: Nothing in these Rules shall exonerate any vessel, or the owner, master or crew thereof, from the consequences of any neglect to comply with these Rules or of the neglect of any precaution which may be required by the ordinary practice of seamen, or by the special circumstances of the case.

In complying with these Rules due regard shall be had to all dangers of navigation and collision and to any special circumstances, including the limitations of the vessels involved, which may make a departure from these Rules necessary to avoid immediate danger.

What this means is that if you're about to be involved in a collision, having stood on or give way in accordance with the Rule; every party involved is responsible in taking avoiding action to prevent a collision.

3. Local Rules require sail craft to keep out of the way of ferries, large cruise ships and oil tankers. Do not impede the safe passage of Commercial Vessel Shipping. Pass at least 500m ahead of their bow. Pass the ferries clear at least 200m from the bow and 30m either side and astern.

Be mindful of larger ships' bow flare. When closing any vessel, to prevent being overrun ensure you remain within sight of the Master / Officer of the Watch on the vessel's bridge. Beware of overhanging bows and other parts of ship that might obstruct this line of sight. This means that your vessel may disappear from sight inside 500m from the bows of very large ships.

Shipping Sound Signal Meanings:

One short blast – I am altering course to starboard (right).

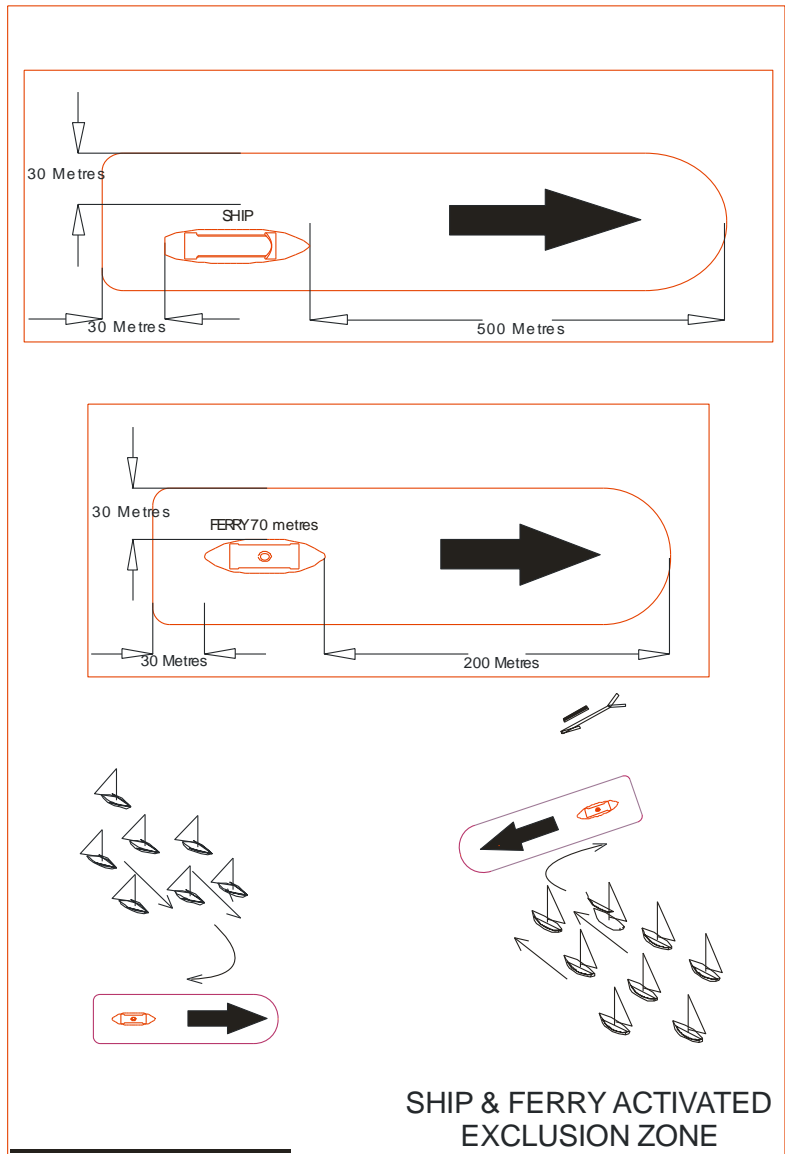
Two short blasts – I am altering course to port (left).

Three short blasts – I am operating engines astern (stopping).

Five (or more) short blasts – I'm unsure of your intentions and I doubt whether you are taking enough avoiding action to avoid collision.

When not racing keep at least 200m clear of any ferry displaying the Orange Diamond.

4. Vessels shall not navigate between moorings whilst racing.



EMERGENCY GUIDE – PORT JACKSON

AMBULANCE | POLICE | FIRE: 000 OR 122

NSW Police Marine Area Command: 1800 658 784
NSW RMS (Maritime) 13 12 36
Middle Harbour Yacht Club: 9969 1244

NSW Marine Recue Port Jackson 9337 5033
NSW Marine Rescue Middle Harbour 9969 3270
NSW Marine Rescue Terry Hills Radio 9450 2468



AMBULANCE PICK UP POINTS

A – Manly Wharf, Manly
B – Middle Harbour Yacht Club Marina, Mosman
C – Taronga Zoo Wharf, Mosman
D – Cremorne Point Wharf, Cremorne

E – Royal Sydney Yacht Squadron, Kirribilli
F – Man 'O' War Steps, Opera House
G – Cruising Yacht Club of Australia
H – Rose Bay Public Wharf, Rose Bay

Appendix "II"

Sydney 38 OD Class

(OD)

1 Schedule of Races

- 1.1 The First Warning Signal will be made at 1155hrs on each day of racing.
 1.2 No Warning Signal will be made after 1530hrs on the last day of racing.
 1.3 A maximum of Nine (9) Races are scheduled, a maximum of Four (4) Races may be sailed on each day of racing.

Date	Race No.	Course Area	Race Committee	Course Type	Time of 1st Warning Signal
Friday 1 st March	1	Course Area "H"	MHYC 'HUGH GEORGE' VHF 74	W/L	1155hrs
	2				ASAP After Race 1
	3				ASAP After Race 2
Saturday 2nd March	4	Course Area "H"	MHYC 'HUGH GEORGE' VHF 74	W/L	1155hrs
	5				ASAP After Race 4
	6				ASAP After Race 5
Sunday 3rd March	7	Course Area "H"	MHYC 'HUGH GEORGE' VHF 74	W/L	1155hrs
	8				ASAP After Race 7
	9				ASAP After Race 8

- 1.4 A notice will be posted by 1000hrs each day of racing to advise the location of the sailing area (Manly Circle, Macquarie Circle or Inshore). Notices will be posted on the website – [click here](#).
 1.5 In the event of adverse weather or sea conditions making conditions offshore unsuitable for racing, the Race Committee may move racing to Sydney Harbour. The Race Committee will Signal Code Flag 'L' and advise competitors on VHF.

2 Class Flags

Division	Class Flag
Division 1 - Sydney OD 38	Numeral Pennant 1 or Sydney 38 OD Class Flag
Division 2 – Open Class IRC Division 2 (Saturday 2 & Sunday 3 March Only)	Numeral Pennant 2

3 Marks and Courses

3.1 Description of Marks

Marks	Description	
Start & Finish mark	Orange Inflatable with Black and White band	
Mark 1 – windward mark for Division 1	Yellow inflatable buoy	
Mark 1a - clearance Mark for Division 1	Yellow inflatable buoy	
Mark 2 – windward mark for Division 2	Orange inflatable buoy	
Gate marks	Yellow inflatable buoys	
Change of course marks	Division 1	Yellow inflatable buoy with a black band
	Division 2	Orange inflatable buoy with a black band

3.2 Description of Courses

The course to be sailed will be indicated by course board displayed from the Committee Vessel. Competitors are advised that a different course signal may be used for each Division.

Course No.	Division	Description (All marks to Port)
1	1	START – 1 – 1a – FINISH
2	1	START – 1 – 1a – Gate – 1 – 1a – FINISH
3	1	START – 1 – 1a – Gate – 1 – 1a – Gate – 1 – 1a – FINISH
4	1	START – 1 – 1a – Gate – 1 – 1a – Gate – 1 – 1a – Gate – 1 – 1a – FINISH

- 3.3 The approx. magnetic bearing to the first mark may be displayed from the Committee Vessel prior to the start.
- 3.4 For all courses, boats shall sail between the Gate marks from the direction of the previous mark. If only one Gate mark is set, boats shall round the mark to port.
- 3.5 To change the next leg of the course, the Race Committee will lay a new mark (or move the finishing line) and remove the original mark as soon as practicable. When in a subsequent change a new mark is replaced, it will be replaced by an original mark.
- 3.6 When the Race Committee lay a new Mark 1, the Mark 1a may not be laid.

4 **The Start**

Boats starting later than 5 minutes after her starting signal will be scored did not start (DNS), this changes RRS A4.1

For the first race of each day, the Open Class races will be started in the order of: Sydney 38 Division 1, then Division 2.

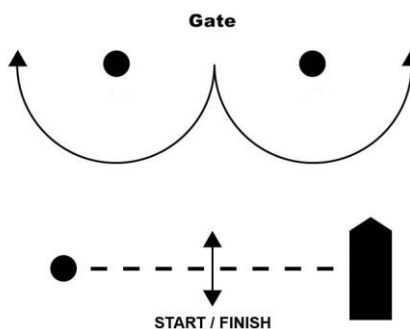
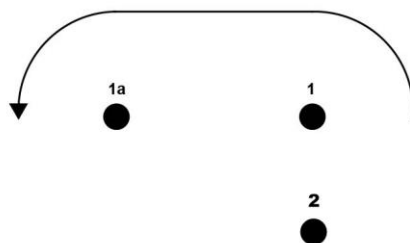
5 **Time Limit**

The time limit for all races will be two (2) hours from the Divisional starting signal.

6 **Course Diagram**

The diagram below shows the course to sail.

Mark 1a (clearance mark) shall be laid approximately 100m to port of Mark 1.



7 Alternative Harbour Marks and Courses

7.1 Description of Marks

Marks	Description	Marks	Description
CBN	AS Mark Chowder Bay North	MW	AS Mark Manly West
CBS	AS Mark Chowder Bay South	NP	AS Mark Nielsen Park
CP	AS Mark Cannae Point	OB	AS Mark Obelisk Bay
EC	AS Mark East Channel	RB	AS Mark Rose Bay
EB	AS Mark Edwards Beach	RP	AS Mark Rocky Point
GP	AS Mark Grotto Point	SM	AS Mark Shark Island
PP	AS Mark Point Piper	BB	AS Mark south of Sow & Pigs reef
LB	AS Mark Lady Bay	TB	AS Mark Taylors Bay
ME	AS Mark Manly East		

Marks	Description
AS MARKS	Yellow Spar Marks
START / FINISH	Inflatable buoy with Black and White band

7.2 Description of Courses

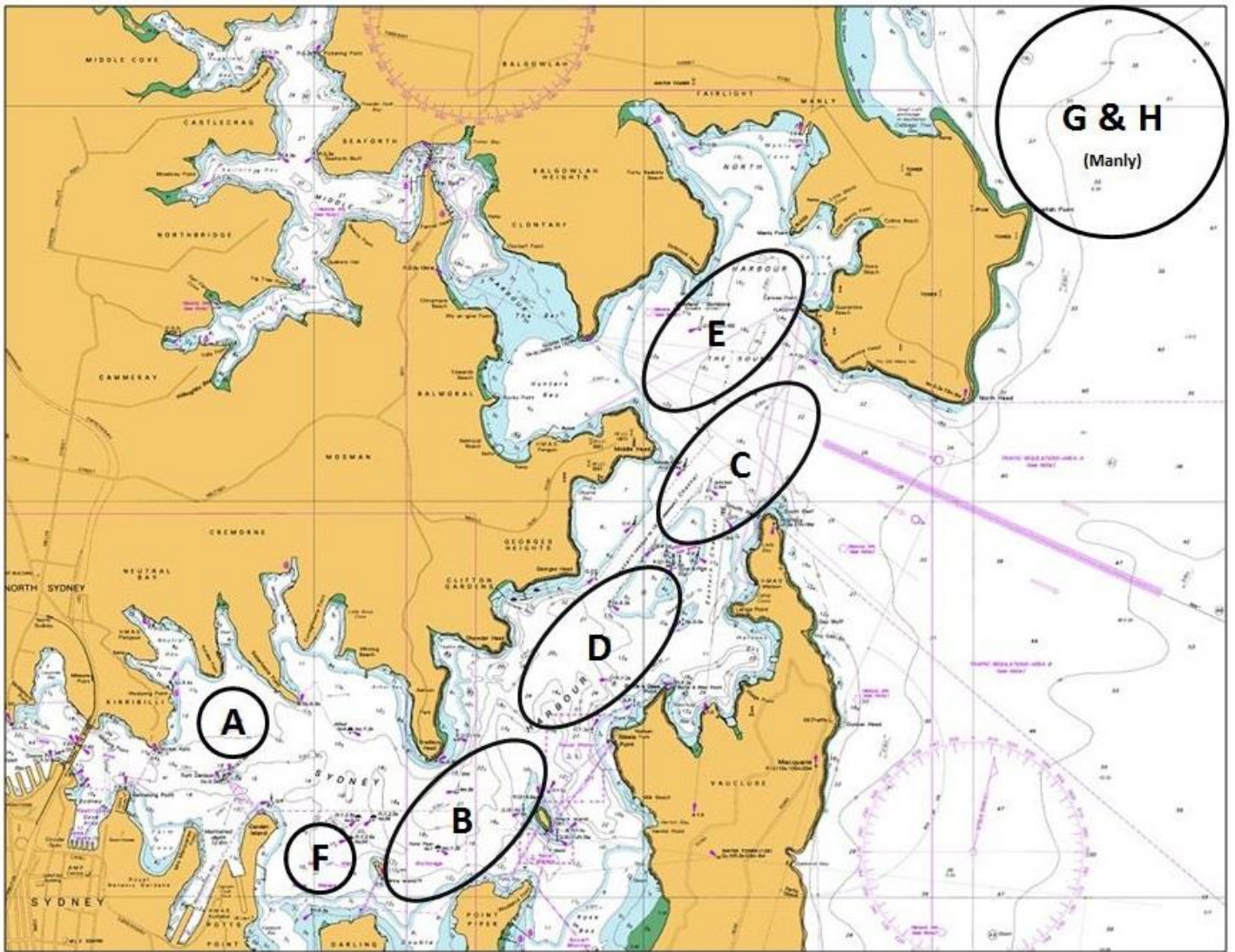
The course to be sailed will be indicated by course board displayed from the Committee Vessel.
Competitors are advised that a different course signal may be used for each Division.

Courses	Start Area	Description	Finish Area
5 (S)	The Sound	Start – Clarke Is – GP – Clarke Is – GP – Finish	The Sound
6 (S)	The Sound	Start – Clarke Is – GP – Clarke Is – GP – Clarke Is – GP – Finish	The Sound
7 (N)	Clark Island	Start – CP – EC – CP – Finish	Clark Island
8 (N)	Clark Island	Start – CP – EC – CP – EC – CP – Finish	Clark Island

7.3 All Marks are to be rounded or passed to Starboard.

Appendix "IX"

Typical North Easterly Course Areas



Appendix "IX" Typical South Easterly Course Area

