



— 2025 —
 NAUTILUS MARINE INSURANCE
**SYDNEY
 HARBOUR**
REGATTA

20th Anniversary

*Incorporating the FarEast 28R Australian Championships, International Dragon NSW Championships
 and Act 1 of the Pallas Capital TP52 Gold Cup*

Saturday 1st & Sunday 2nd March 2025

SAILING INSTRUCTIONS

Amended 25 February 2025

SPONSORED BY...



NAUTILUS MARINE
 BOAT INSURANCE



KIESER
 PHYSIO | REHAB | STRENGTH



SUPPORTED BY...



NAUTILUS MARINE INSURANCE SYDNEY HARBOUR REGATTA 2025
Saturday 1st & Sunday 2nd March

ALLOCATION OF CLASSES TO COURSE AREAS

Course Area 'A' – Sydney Flying Squadron (Appendix VI)

- Historic 18' Skiffs (Pursuit)

Course Area 'B' – Royal Sydney Yacht Squadron (Appendix V)

- International Etchells Class [OD]
- International Dragon Class [OD]
- International J/70 Class [OD]
- Far East 28R Class [OD]
- VX-One Class [OD]

Course Area 'C' – Sydney Amateur Sailing Club, Royal Prince Edward Yacht Club, Manly Yacht Club & Royal Australian Naval Sailing Association (Appendix IV)

- Performance Class, Spinnaker: Division 1 [ORC/PHS]
- Performance Class, Spinnaker: Division 2 [ORC/PHS]
- Performance Class, Spinnaker: Division 3 [ORC/PHS]
- Performance Class, Non-Spinnaker Division [PHS]
- Classic Keelboats Division [PHS]

Course Area 'D' – Royal Prince Alfred Yacht Club (Appendix III)

- International J/24 [OD/PHS]
- Super 30 [PHS]
- Super 40 [EHC]

Course Area 'E' – Middle Harbour Yacht Club, Cruising Yacht Club of Australia & Manly Yacht Club (Appendix II)

- Open Class Division 1 [IRC / ORC]
- Open Class Division 2 [IRC / ORC]

Course Area 'F' – Cruising Yacht Club of Australia & Middle Harbour Yacht Club (Appendix I)

- Super 50 / TP52 Class [IRC / TPR]

Approximate Course Area Locations are shown in Appendices 'VIII' & 'IX'

GENERAL SAILING INSTRUCTIONS

Middle Harbour Yacht Club (MHYC) as the Organising Authority, will conduct the Sydney Harbour Regatta on the waters of Sydney Harbour and the nearby Tasman Sea on Saturday 1st and Sunday 2nd March 2025. Further instructions for each Class or Division are detailed in each Series Appendix, which forms part of the Sailing Instructions.

1 RULES

- 1.1 The Sydney Harbour Regatta will be governed by the following:
- the rules as defined in The Racing Rules of Sailing,
 - the Special Regulations of Australian Sailing (AS), and
 - the current IRC Rules, Parts A, B and C (if applicable),
 - the Regulations of NSW Maritime in regard to Ships and Ferries exclusion zones, except as any of these are modified by these Sailing Instructions.
- 1.2 At the discretion of the Organising Authority, a Class or Division with less than six (6) eligible entries may be abandoned or combined with another class or division.
- 1.3.1 For all Classes, scoring penalties shall apply at the discretion of the Protest Committee.
- 1.3.2 The Protest Committee may go afloat to observe racing. Whilst afloat the Protest Committee may sound a whistle to indicate they have observed a racing incident.
- 1.4 Boats in the Performance Non-Spinnaker Class shall not fly spinnakers. Only a mainsail and headsails as defined in RRS 55.4 shall be used. Headsails shall not be set flying. Headsails may be poled out but must be tacked to the foot of the forestay and fully attached to the forestay. No sail shall be set forward of a point of attachment of the permanent forestay.
- 1.5 The following Racing Rules of Sailing (RRS) will be amended:
- RRS 41: Is changed that, 'whilst racing a boat may retrieve data from any page of the Event or MHYC Websites, even if that page is not publicly available.'
 - RRS 44.1: Is changed that 'only a one (1) turn penalty, including one (1) tack and one (1) gybe is required, except for infringements that occur within the "zone" of a rounding mark.'
 - RRS 55.1 and 55.2: Fixed and retractable spinnaker poles and bowsprits are permitted for the purpose of setting asymmetrical spinnakers.
 - RRS 51: Subject to NoR 1.2.2, a boat with movable or variable ballast (within the meaning of those terms in the Special Regulations) may move that ballast for the purpose of changing trim or stability.
 - RRS 52: Is changed so that it 'does not apply to the adjustment and operation of sails or to the adjustment of movable appendages on boats over 12.0m LOA. This Rule is changed to permit powered winches for boats over 12.0m LOA and as detailed in NoR 1.2.2.
 - RRS 78.2: Where required, valid Rating / Class certificates shall be produced by the due date specified in the Notice of Race.
 - RRS35, A5.2 and A5.1: Are amended so that boats still racing at the expiration of the race time limit will be scored points equal to the number of boats finishing within the time limit plus a score of 30% of the number of starters rounded to the nearest whole number, but no more points than the number of starters. Such boats will be scored TLE.
- 1.6 The Adams 10 Class Rules are amended at the request of the Class to permit the use of Mast Head Spinnakers. Mast Head spinnakers shall conform to the following maximum measurements:
- | | |
|-------------------------------|---------|
| Maximum Luff | 13.689m |
| Maximum SMV | 8.230m |
| Maximum length spinnaker pole | 3.727m |
- 1.7 Special Regulations:
The following Australian Sailing Special Regulations Categories will apply:
- | CLASS (SERIES) | AS SPECIAL REGULATIONS |
|----------------------------|------------------------|
| Super 50 / TP52 Class | Part 1 Category 5 |
| VX-One Class | Part 2 |
| Historic 18' Skiffs | Part 2 |
| All Other Keelboat Classes | Part 1 Category 7 |
- 1.8 The Race Committee may inspect any boat at any time for Special Regulation and Class rule compliance. Any alleged breaches may be protested by the race committee only.
- 1.9 For crew members to be eligible for the crew prize, boats shall register their crew for each race day prior to the warning signal via the boat's SailSys account.
- 1.10 Competing boats shall report to their Course Area Race Committee Vessel, with mainsail hoisted on starboard tack, prior to the warning signal of the first race of each day of racing to confirm their intention to compete. Boats which cannot be identified prior to their warning signal may be scored as DNS.
- 1.11 Competing boats which retire from racing shall advise their Course Area Race Committee Vessel at the earliest opportunity or contact the MHYC Sailing Office in person or by phone (02) 9969 1244.

2 ELIGIBILITY

Eligibility is in accordance with the Notice of Race.

3 NOTICES TO COMPETITORS

Notices will be posted online at www.shr.mhyc.com.au/racing/notices-to-competitors.html. Printed copies of the notices may also be posted on the noticeboard located at Middle Harbour Yacht Club or on the noticeboards of participating clubs.

4 CHANGES IN SAILING INSTRUCTIONS

- 4.1 Any changes to Sailing Instructions will be posted on the Official Notice Board at least 2 hours before the scheduled start time of the first race for which they will take effect.
- 4.2 Any changes to Sailing Instructions made afloat will be indicated by the display of the 3rd Substitute accompanied by two sound signals. The change will be communicated verbally on the designated course VHF Channel and/or displayed on the Course Area Race Committee Vessel.
- 4.3 Changes to the schedule of races will be posted on the Official Notice Board before 2000hrs on the day preceding the race concerned and may also be posted on www.shr.mhyc.com.au.

5 RADIO COMMUNICATION

- 5.1 The Race Committee may broadcast the course to be sailed, names/sail numbers of OCS boats, and/or other information of interest to competitors on the designated course VHF channel. Any failure of, or defect in, such a broadcast will not be grounds for redress. This alters RRS 60 and 61.
- 5.2 A boat shall neither make radio transmissions whilst racing nor receive radio communications not available to all boats. This restriction also applies to mobile telephones.

6 SIGNALS

- 6.1 Signals made ashore will be displayed from the MHYC flagstaff located on the North-Eastern perimeter of the Club House (Starters Box). Signals may be repeated at other supporting clubs.
- 6.2 Code Flag AP with two sounds (one sound when lowered) means "Racing is postponed. The warning signal will be made not less than 60 minutes after AP is lowered".

7 SCHEDULE OF RACES

Please refer to each Class / Division Sailing Instruction Appendix for further detail.

CLASSES/ DIVISIONS	APPE NDIX	COURSE AREA	RACE COMMITTEE	VHF	SAT 1 MARCH	SUN 2 MARCH
Super 50 / TP52 Class	I	F	CYCA-MHYC	73	2 x Offshore W/L Start & Finish Inshore	2 x Offshore W/L Start & Finish Inshore
Open Class Divisions	II	E	MHYC-CYCA	71	3 x W/L	3 x W/L
Int. J/24 Class	III	D	RPAYC	77	3 x W/L	3 x W/L
Adams 10m Class	III	D	RPAYC	77	3 x W/L	3 x W/L
Super 30 Group	III	D	RPAYC	77	3 x W/L / Passage	3 x W/L / Passage
Super 40 Group	III	D	RPAYC	77	3 x W/L / Passage	3 x W/L / Passage
Performance Class (Spin.) Divs. 1, 2 & 3	IV	C	SASC-RPEYC- MYC-RANSA	72	2 x Harbour Passage	2 x Harbour Passage
Performance Class (Non-Spin.)	IV	C	SASC-RPEYC- MYC-RANSA	72	2 x Harbour Passage	2 x Harbour Passage
Classic Keelboats	IV	C	SASC-RPEYC- MYC-RANSA	72	2 x Harbour Passage	1 x Harbour Passage
Int. Etchells Class	V	B	RSYS	74	3 x W/L	-
Int. Dragon Class	V	B	RSYS	74	3 x W/L	3 x W/L
Int. J/70 Class	V	B	RSYS	74	3 x W/L	3 x W/L
VX-One Class	V	B	RSYS	74	3 x W/L	3 x W/L
Far East 28R Class	V	B	RSYS	74	3 x W/L	3 x W/L
Historic 18' Skiffs	VI	A	SFS	73	Harbour Race	-
LEGEND						
Hybrid – Inshore Start & Finish with Offshore Windward Leeward / Laid Marks Courses						
W/L – Inshore Windward Leeward / Laid Marks Courses						
W/L - Inshore Windward Leeward Courses						
Mixed – Inshore Windward Leeward / Harbour Passage Courses						
Harbour – Fixed and Laid Mark Passage Courses in Sydney Harbour						

8 THE START LINE

- 8.1 The starting line will be between a signal mast displaying an Orange Flag on the Race Committee Vessel and a port end starting mark.
- 8.2 Boats sailing in divisions allocated to one course area shall not pass through the starting line of another course area. Boats failing to comply with this instruction may be protested by the Race Committee only.

9 THE FINISH LINE

- 9.1 The finishing line will be between a signal mast displaying a Blue Flag on the Race Committee vessel and a nearby finishing mark. The finishing line for the Performance Spinnaker, Performance Non-Spinnaker and Classic Keelboats Divisions will be in a different location to the starting line as detailed in Appendix IV section 3.2 – Description of Courses.
- 9.2 Boats sailing in divisions allocated to one course area shall not pass through the finishing line of another course area. Boats failing to comply with this instruction may be protested by the Race Committee only.

10 EVENT ADVERTISING

- 10.1 The Organising Authority does not require sponsor backstay flags or boom decals to be displayed.

11 OFFICIAL VESSELS

Official boats may be identified as follows:

Race Committee Vessels may display a Course Area flag together with the conducting Clubs burgee or flag. Mark boats may display the Course Area flag or conducting Clubs burgee or flag.

12 PROTEST AND REQUEST FOR REDRESS

- 12.1 Protests shall be lodged at the MHYC Office within 90 minutes of the finish time of the last boat in the protesting boat's Class or Division in the last race of the day. Protest forms are available from the MHYC Regatta Office or online on the event website. Protests may be lodged in person or by email to sailing@mhyc.com.au.
- 12.2 Notification of the details of protest hearings will be placed on the Official Notice Board as soon as possible to inform competitors when there is a hearing in which they are parties to a protest or named as a witness. All hearings shall take place in the Commodore's Room at MHYC. These notices are deemed to fulfil the requirements of RRS 63.1. Representatives of boats who are parties to hearings, and their witnesses, are advised to remain on call in the vicinity of the MHYC (or any other place as directed by the protest committee).
- 12.3 In accordance with RRS 60.5(c), for a breach of a rule of RRS Part 2, the protest committee may award a disqualification or a scoring penalty. For all other rules the penalty shall be at the discretion of the protest committee which may include no penalty.

13 ARBITRATION

- 13.1 For protests involving an alleged breach of the rules of Part 2 of the RRS, an arbitration hearing may be held prior to a protest hearing in accordance with RRS Appendix T.
- 13.2 The arbitrator may be a member of any subsequent protest committee or may observe and give testimony to the protest committee. This changes RRS 63.3(a).

14 RESULTS

Results will be posted to the event website at www.shr.mhyc.com.au.

15 SCORING SYSTEM

15.1 Appendix A of the RRS shall apply, except there shall be no discards and a boat's total score will be the sum of her scores in all races completed.

15.2 Number of scheduled races, number of races required for a Series and Handicap System

CLASS (SERIES)	RACES SCHEDULED	REQ'D FOR SERIES	HANDICAP
Super 50 / TP52 Class	4	1	IRC / TPR
Open Class Divisions 1 & 2	6	2	IRC / ORC / PHS
Super 30 Group	6	2	PHS
Super 40 Group	6	2	EHC/ORC
One Design Class - International Dragon	6	2	OD
One Design Class - International J/70	6	2	OD
One Design Class - International J/24	6	2	OD / PHS
One Design Class - International Etchells	3	1	OD
One Design Class – Far East 28R	6	2	OD
One Design Class – VX-One	6	2	OD
One Design Class – Adams 10	6	2	OD
Performance Class (Spinnaker: Divisions 1 - 3)	4	1	ORC / PHS
Performance Class (Non-Spinnaker)	4	1	PHS
Classic Keelboats	3	1	PHS
Historic 18' Skiffs	1	1	Pursuit

16 ALTERNATIVE PENALTIES

RRS 44.1 is changed so that a one (1) turn penalty, including one (1) tack and one (1) gybe is required, except for infringements that occur within the “zone” of a rounding mark.

17 HANDICAPS

- IRC handicaps will be the boat's TCC rating as stated on the boat's IRC certificate.
- ORC (ORCi and ORCc) handicaps will be the boat's Time-on-Time All Purpose rating as stated on the boat's ORC certificate for passage races. For windward-leeward races, ORC handicaps will be the boat's Time-on-Time W/L rating as stated on the boat's ORC certificate.
- One Design Classes; Adams 10, J/70, J/24, Etchells, Dragon, VX-One and Far East 28R will have no handicap and will be scored on elapsed time (One Design).
- TP52 Ratings (TPR) will be supplied by the TP52 Class Association.
- Event Handicaps (EHC) will be supplied by the Regatta Handicap Committee.
- Performance based handicaps (PHS) including event handicaps (EHC) may be adjusted at any time during the regatta.
- EHC handicaps for the Super 40 Group shall be based on PHRF and provided by the Super 40 Class.
- The decision of the Race Committee or their representative on any handicap matter will be final and will not be grounds for requests for redress. This alters RRS 60.1 (b).

18 COURSE AREAS

Course Areas as shown in Appendices VIII & IX are approximate only and may be changed by the Organising Authority.

19 SUPPORT BOATS

19.1 Team leaders, coaches and other support personnel shall not be in the racing area from the time of the preparatory signal until all boats have finished or the Race Committee signals a postponement, general recall or abandonment.

19.2 The penalty for failing to comply with this requirement may be disqualification of all boats associated with the support personnel who do so.

20 HAUL OUT RESTRICTIONS AND PLASTIC POOLS

There shall be no restriction on the use of plastic pools or haul out of boats or the use of underwater breathing apparatus under boats during the Sydney Harbour Regatta.

21 PRIZES

21.1 The Official Presentation and Prize Giving will be held at **1900hrs on Monday 3 March 2025**, at the Middle Harbour Yacht Club. Prizes may be awarded to the overall winners (1st) and place getters (2nd and 3rd) in each Class or Division consisting of six (6) or more entrants. Additional Sponsor Prizes may also be awarded. All competitors are invited to attend.

21.2 Grand Prizes offered by the Organising Authority and Event Sponsors will be drawn at the Official Presentation. Details, terms and conditions have been published in a Notice to Competitors published on the event website.

-
- 21.3 The Organising Authority will offer a winning boat's registered Club the opportunity to display Perpetual Trophies at their registered Club. This will be subject to the completion of the engraving of the winning boat's name and held until one (1) month prior to the next Sydney Harbour Regatta. Where a registered Club declines this offer, Perpetual Trophies will be held on display by the Organising Authority.

22 DISCLAIMER OF LIABILITY

- 22.1 All those taking part in races conducted by the Organising Authority do so at their own risk and responsibility.
- 22.2 The Organising Authority is not responsible for the seaworthiness of a yacht whose entry is accepted or the sufficiency or adequacy of its equipment.
- 22.3 The Organising Authority is not responsible for any damage or injury, either ashore or at sea to persons or yachts which might result from participating in races conducted by the club.
- 22.4 Attention is drawn to RRS 3: decision to race: ***"the responsibility for a boat's decision to participate in a race or to continue racing is hers alone"***.

23 MEDIA

With the consent of the Organising Authority, a boat may carry on board a Media Representative for the purposes of photography, filming, sound recording and journalism and who shall not participate in the sailing or navigation of the boat. Such media representative shall be exempt from the boat's compliance with its Class Rules in respect of Crew Numbers and Crew Weight.

24 CARDINAL MARKS AND FERRIES AND COMMERCIAL SHIPPING

24.1 Cardinal Marks

Boats shall pass on the safe water side of all Sydney Harbour Cardinal Marks.

Boats shall not sail in the following prohibited areas:

- The area bounded by imaginary lines projected from the shore and joining the West, South and East Cardinal Marks surrounding Gowlland Bombora.
- The area bounded by imaginary lines joining the North, East, South and West Cardinal Marks surrounding Sow and Pigs Reef.
- The area between AS Mark Shark Island and the South Cardinal Mark Shark Island.

For the purpose of RRS 18 and 19, all Cardinal Marks surrounding the Gowlland Bombora and the Sow and Pigs Reef and all imaginary straight lines projected between such marks, shall be deemed obstructions.

24.2 Ferries and Commercial Shipping

Boats shall not interfere with the Commercial or Defence Shipping of the Port and shall not approach closer than 30m on either side or astern or 500m ahead of any commercial ship and pass ferries clear at least 200m from the bow and 30m either side or astern. Refer to Illustration of Ferry and Ship Activated Exclusion Zone.

Commercial ships and ferries may be escorted by a NSW Roads and Maritime Services vessel. Competing boats shall not obstruct these escort vessels, cause it/them to move station or collide with them. Competing boats shall obey all instructions of the escort vessel and shall not pass between the ship being escorted and the escort vessel. Complying with an instruction of an escort vessel shall not be grounds for redress under RRS 62.

- 24.3 Any boat observed by the Race Committee to breach the requirements of SI 24 or against whom a complaint is received from NSW Roads and Maritime Services, Sydney Ports, Harbour City Ferries, or the Master of a commercial or recreational vessel may be subject to action by the Race Committee or Protest Committee under RRS Part 5, Section A.

Competitor's Brief

1. Be Safe!
2. Observe NSW Collision regulations and in particular Rule 1 (b) and Rule 2(a) (b) ie: Nothing in these Rules shall exonerate any vessel, or the owner, master or crew thereof, from the consequences of any neglect to comply with these Rules or of the neglect of any precaution which may be required by the ordinary practice of seamen, or by the special circumstances of the case.

In complying with these Rules due regard shall be had to all dangers of navigation and collision and to any special circumstances, including the limitations of the vessels involved, which may make a departure from these Rules necessary to avoid immediate danger.

What this means is that if you're about to be involved in a collision, having stood on or give way in accordance with the Rule; every party involved is responsible in taking avoiding action to prevent a collision.

3. Local Rules require sail craft to keep out of the way of ferries, large cruise ships and oil tankers. Do not impede the safe passage of Commercial Vessel Shipping. Pass at least 500m ahead of their bow. Pass the ferries clear at least 200m from the bow and 30m either side and astern.

Be mindful of larger ships' bow flare. When closing any vessel, to prevent being overrun ensure you remain within sight of the Master / Officer of the Watch on the vessel's bridge. Beware of overhanging bows and other parts of ship that might obstruct this line of sight. This means that your vessel may disappear from sight inside 500m from the bows of very large ships.

Shipping Sound Signal Meanings:

One short blast – I am altering course to starboard (right).

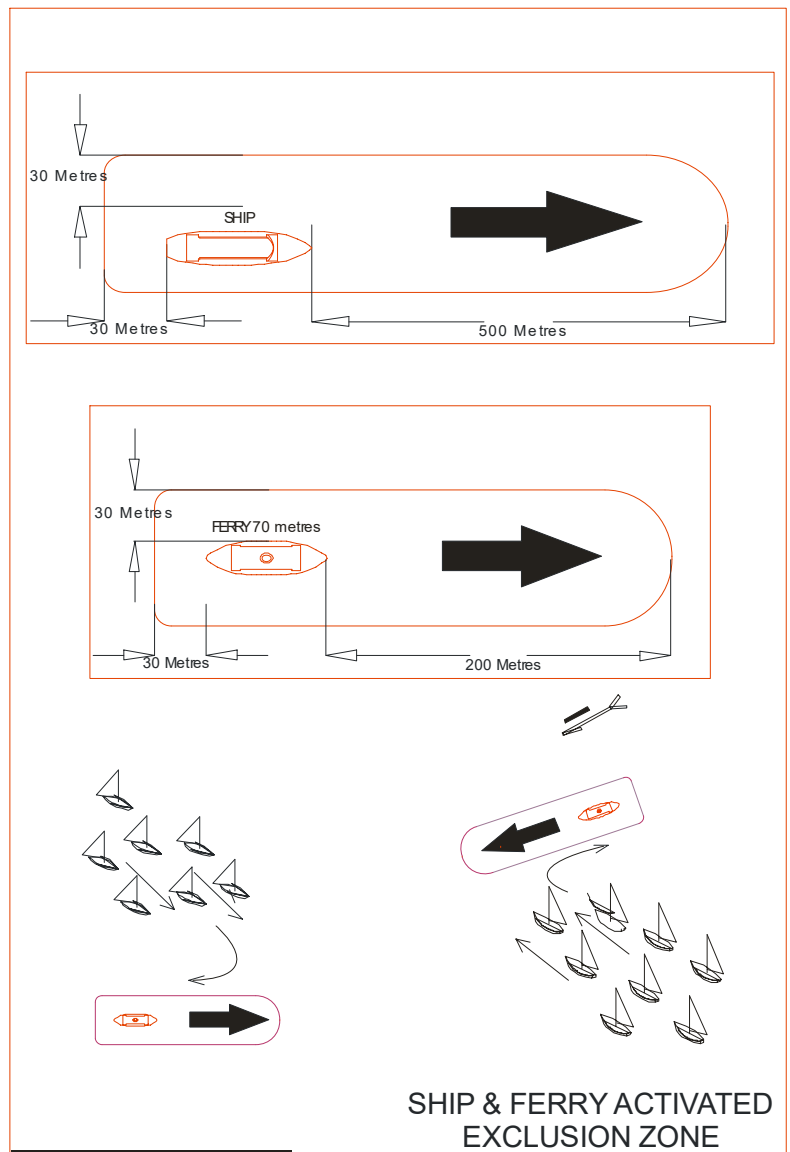
Two short blasts – I am altering course to port (left).

Three short blasts – I am operating engines astern (stopping).

Five (or more) short blasts – I'm unsure of your intentions and I doubt whether you are taking enough avoiding action to avoid collision.

When not racing keep at least 200m clear of any ferry displaying the Orange Diamond.

4. Vessels shall not navigate between moorings whilst racing.



EMERGENCY GUIDE – PORT JACKSON

AMBULANCE | POLICE | FIRE: 000 OR 122

NSW Police Marine Area Command: 1800 658 784
NSW RMS (Maritime) 13 12 36
Middle Harbour Yacht Club: 9969 1244

NSW Marine Recue Port Jackson 9337 5033
NSW Marine Rescue Middle Harbour 9969 3270
NSW Marine Rescue Terry Hills Radio 9450 2468



AMBULANCE PICK UP POINTS

A – Manly Wharf, Manly
B – Middle Harbour Yacht Club Marina, Mosman
C – Taronga Zoo Wharf, Mosman
D – Cremorne Point Wharf, Cremorne

E – Royal Sydney Yacht Squadron, Kirribilli
F – Man 'O' War Steps, Opera House
G – Cruising Yacht Club of Australia
H – Rose Bay Public Wharf, Rose Bay

Appendix “I” – “F” (Foxtrot) Course Area Super 50 Group (Includes TP52 Class) (IRC & TPR)

1 Schedule of Races

- 1.1 The First Warning Signal will be made at 1055hrs on each day of racing.
1.2 No Warning Signal will be made after 1530hrs on the last day of racing.
1.3 A maximum of Four (4) Races are scheduled, a maximum of Three (3) Races may be sailed on each day of racing.

Date	Race Nos.	Course Area	Start / Finish Area	Race Committee	Course Type	Time of 1st Warning Signal
Saturday 1 st March	1 & 2	Course Area “F”	Vicinity of The Sound	CYCA ‘OFFSHORE’ VHF 73	Hybrid	1055hrs Second warning ASAP after race 1
Sunday 2nd March	3 & 4	Course Area “F”	Vicinity of The Sound	CYCA ‘OFFSHORE’ VHF 73	Hybrid	1055hrs Second warning ASAP after race 13

- 1.4 A notice will be posted by 0900hrs each day of racing to advise the location of the start line and outer course area (Manly Circle, Macquarie Circle or Inshore). Notices will be posted on the website – [click here](#).
1.5 In the event of adverse weather or sea conditions making conditions offshore unsuitable for racing, the Race Committee may move racing to inside Sydney Harbour. The Race Committee may Signal Code Flag ‘L’ and advise competitors on VHF.

2 Class Flags

Division	Class Flag
Super 50 (including TP52)	Int. Code Flag “Q”

3 Marks and Courses

3.1 Description of Marks

Marks	Description
Start & Finish Mark	Black and White inflatable buoy
Mark 1 – outer mark for Super 50	Orange inflatable buoy – approx. 1.5nm - 2nm windward of Mark 2
Mark 2 – inner mark for Super 50	Orange inflatable buoy Manly Circle – approx. 1.2nm East of North Head Macquarie Circle – approx. 1.2nm East of Macquarie Light

3.2 Description of Courses

The course to be sailed will be indicated by course board displayed on the Starting Vessel or by numeral pennant displayed with the class flag.
Competitors are advised that a different course signal may be used for each Division.

Courses	Division	Description (All marks to Port)
1	Super 50	START – 1 – FINISH
2	Super 50	START – 1 – 2 – 1 – FINISH
3	Super 50	START – 1 – 2 – 1 – 2 – 1 – FINISH

- 3.3 The approx. magnetic bearing of the leeward to windward mark axis may be displayed from the Committee Vessel prior to the start.
3.4 The course will not be changed after the start.
3.5 All marks shall be rounded to port.

4 Cardinal Marks & Prohibited Areas

4.1 Boats shall pass on the safe water side of all Sydney Harbour Cardinal Marks.

4.2 Boats shall not sail in the following prohibited areas:

- The area bounded by imaginary lines projected from the shore and joining the West, South and East Cardinal Marks surrounding Gowlland Bombora.
- The area bounded by imaginary lines joining the North, East, South and West Cardinal Marks surrounding Sow and Pigs Reef.
- The area between AS Mark Shark Island and the South Cardinal Mark Shark Island.

4.3 For the purpose of RRS 18 and 19, all Cardinal Marks surrounding the Gowlland Bombora and the Sow and Pigs Reef and all imaginary straight lines projected between such marks, shall be deemed obstructions.

5 The Start

5.1 The starting area may be in the vicinity of The Sound or Watson's Bay. A notice will be posted by 0900hrs each day of racing to advise the location.

5.2 Boats starting later than 5 minutes after her starting signal will be scored did not start (DNS). This changes RRS A4.1.

6 The Finish

6.1 The finish area may be in the vicinity of The Sound or Watson's Bay.

6.2 The finishing line will be between a staff displaying a blue flag on the committee boat and the course side of the finishing mark.

7 Time Limit

7.1 The time limit will be three (3) hours from the starting signal.

8 Course Diagram

The diagram below shows the course to sail (not to scale – distances are approximate only).



9 Alternative Harbour Marks and Courses**9.1 Description of Marks**

Marks	Description	Description
START / FINISH	Inflatable	Black and White Buoy
NH	Laid Mark NE of Reef Beach Approx. 33°48.327'S 151°16.617'E	Orange Inflatable Buoy
B&G	Laid Mark W of Bottle & Glass Point Approx. 33°50.732'S 151°16.015'E	Orange Inflatable Buoy with Black Band
SM	AS Mark Shark Island	Yellow Spar Mark

9.2 Description of Courses

The course to be sailed will be indicated by course board displayed on the Starting Vessel or by numeral pennant displayed with the class flag.

Courses	Start Area	Description (All marks to be rounded or passed to Starboard)	Finish Area
4 (S)	Watsons Bay	Start – SM – Shark Is – NH – B&G – NH – Finish (12nm approx.)	Watsons Bay
5 (S)	Watsons Bay	Start – SM – Shark Is - NH – SM – Shark Is - NH – Finish (14nm approx.)	Watsons Bay
6 (N)	Watsons Bay	Start – NH – B&G – NH – Finish (10nm approx.)	Watsons Bay
7 (N)	Watsons Bay	Start – NH – SM – Shark Is - NH – SM – Shark Is – Finish (14nm approx.)	Watsons Bay

Appendix “II” – “E” (Echo) Course Area

Open Class Divisions (IRC & ORC)

~~One Design Class J/24 (OD)~~

1 Course Areas and Classes

Course Area	Class	Race Committee	Approximate location	VHF Channel
Course Area E	Open Division 1 Open Division 2 International J/24 Class	MHYC – CYCA - MYC MV “Hugh S George”	The Sound See Appendices IX & X	71

2 Schedule of Races

The First Warning Signal will be made at 1055hrs on each day of racing.

No Warning Signal will be made after 1530 hours on the last day of racing.

A maximum of Six (6) Races are scheduled, a maximum of Four (4) races may be sailed on each day of racing.

Date	Race No.	Course Area	Course Type	Time of 1st Warning Signal
Saturday 1st March	Up to 4 races	Course Area E	W / L	1055hrs
Sunday 2nd March	Up to 4 races	Course Area E	W / L	1055hrs

3 Class Flags

The order in which the Class Flags are listed below for each Course Area will also be the order of Start Sequence for the first race.

Class	Class Flag
Open Division 1	Int. Code Flag “D”
Open Division 2	Int. Code Flag “E”
International J/24 Class	J/24 Insignia on White Background

4 Marks and Courses

4.1 Description of Marks

Marks	Description
Start & Finish	Yellow Inflatable
Alternative Finish	Inflatable with Black & White Band
Mark 1	Orange Inflatable
Mark 2	Yellow Inflatable
Mark 3	Pink Inflatable
Gate Marks 4s&p	Orange Inflatables

5 Description of Windward-Leeward Courses

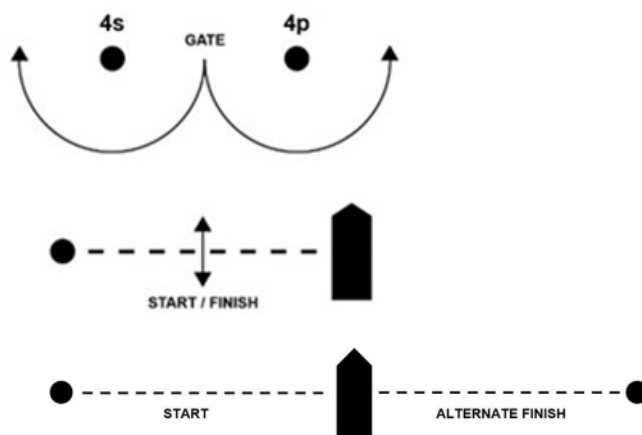
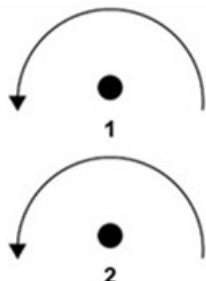
5.1 The course to be sailed will be indicated by course board displayed on the Starting Vessel with the letter “W” preceding the number of laps to be sailed. Competitors are advised that a different course signal may be use for each Class.

COURSE No.	W/L Course (All marks to Port except gate)
W1	Open Division 1 – START – 1 – FINISH Open Division 2 - START – 2 – FINISH J/24 Division – START – 3 – FINISH
W2	Open Division 1 – START – 1 – 4s /4p – 1 – FINISH Open Division 2 - START – 2 – 4s /4p – 2 – FINISH J/24 Division – START – 3 – 4s /4p – 3 – FINISH
W3	Open Division 1 – START – 1 – 4s /4p – 1 – 4s /4p – 1 – FINISH Open Division 2 - START – 2 – 4s /4p – 2 – 4s /4p – 2 – FINISH J/24 Division – START – 3 – 4s /4p – 3 – 4s /4p – 3 – FINISH

- 5.2 The approx. magnetic bearing to the first mark may be displayed from the Race Committee Vessel prior to the start.
- 5.3 For all W/L courses, boats shall sail between the Gate marks from the direction of the previous mark. If only one Gate mark is set, boats shall round the mark to port.
- 5.4 The course will not be changed after the start.
- 5.5 At the discretion of the race committee, **Mark 1 or 2** may not be laid.

6 Windward-Leeward Course Diagram

The diagram below shows the course to sail.



5 The Start

Boats starting later than 5 minutes after her starting signal will be scored did not start (DNS). This changes RRS A4.1.

6 The Finish

- 6.1 The finishing line will be between a staff displaying a blue flag on the committee boat and the course side of the finishing mark.
- 6.2 When a finish mark with a black & white chequered band is laid on the starboard side of the race committee vessel, boats shall finish by passing the committee vessel to starboard and the B&W finish mark to port.
- 6.3 When a finish mark with a black & white chequered band is not laid on the starboard side of the race committee vessel, boats shall finish by passing the committee vessel to port and the yellow start mark to starboard.

6 Time Limit

The time limit will be 90 minutes from the Class starting signal.

Appendix “III” – “D” (Delta) Course Area

Adams 10 One Design Class J/24 & Super Groups (Super 30 & Super 40)

1 Course Areas and Classes

Course Area	Class	Race Committee	Approximate location	VHF Channel
Course Area D	Super 40 Super 30 Adams 10 Class J/24 Class	RPAYC MV “Alfreds II”	The Sound See Appendices IX & X	77

2 Schedule of Races

The First Warning Signal will be made at 1055hrs on each day of racing.

No Warning Signal will be made after 1530 hours on the last day of racing.

Six (6) Races are scheduled, a maximum of Four (4) races may be sailed on each day of racing.

Date	Race No.	Course Area	Course Type	Time of 1st Warning Signal
Saturday 1st March	Up to 4 races	Course Area D	J/24 - W / L.	1055hrs
Sunday 2nd March	Up to 4 races	Course Area D	Super 40 and Super 30 - W / L or Passage.	1055hrs

3 Class Flags

The order in which the Class Flags are listed below for each Course Area will also be the order of Start Sequence for the first race of each day.

Course Area	Class	Class Flag
Course Area D	Super 40 Super 30 Adams 10 Class J/24 Class	Int. Code Flag “F” Int. Code Flag “G” Adams 10 Insignia on White J/24 Insignia on White

4 Marks and Courses

4.1 Description of Marks

Marks	Description
Start & Finish	Black & White Inflatable
Alternate Finish (Passage Races)	Pink Inflatable with Green Band
Windward-Leeward	Laid Marks
Mark 1	Red Inflatable
Mark 2	Orange Inflatable
Mark 3	Pink Inflatable
Gate Marks 4s & 4p	Yellow Inflatables
Change Mark 1	Red Inflatable with Black Band
Change Mark 2	Orange Inflatable with Black Band
Harbour Passage	Fixed Marks
CP	AS Mark Cannae Point
EB	AS Mark Edwards Beach
GP	AS Mark Grotto Point
LB	AS Mark Lady Bay
ME	AS Mark Manly East
MW	AS Mark Manly West
OB	AS Mark Obelisk Bay
RP	AS Mark Rocky Point

4.2 Description of Windward-Leeward Courses

4.2.1 The course to be sailed will be indicated by course board displayed on the Starting Vessel. Competitors are advised that a different course signal may be used for each Class.

COURSE No.	W/L Course (All marks to Port except gate)
W2	Super 40: START - 1 - 4s/4p - 1 - FINISH
	Super 30: START - 2 - 4s/4p - 2 - FINISH
	J/24: START - 3 - 4s/4p - 3 - FINISH
W3	Super 40: START - 1 - 4s/4p - 1 - 4s/4p - 1 - FINISH
	Super 30: START - 2 - 4s/4p - 2 - 4s/4p - 2 - FINISH
	J/24: START - 3 - 4s/4p - 3 - 4s/4p - 3 - FINISH

4.2.2 The approx. magnetic bearing to the first mark may be displayed from the Race Committee Vessel prior to the start.

4.2.3 For all W/L courses, boats shall sail between the Gate marks from the direction of the previous mark. If only one Gate mark is set, boats shall round the mark to port.

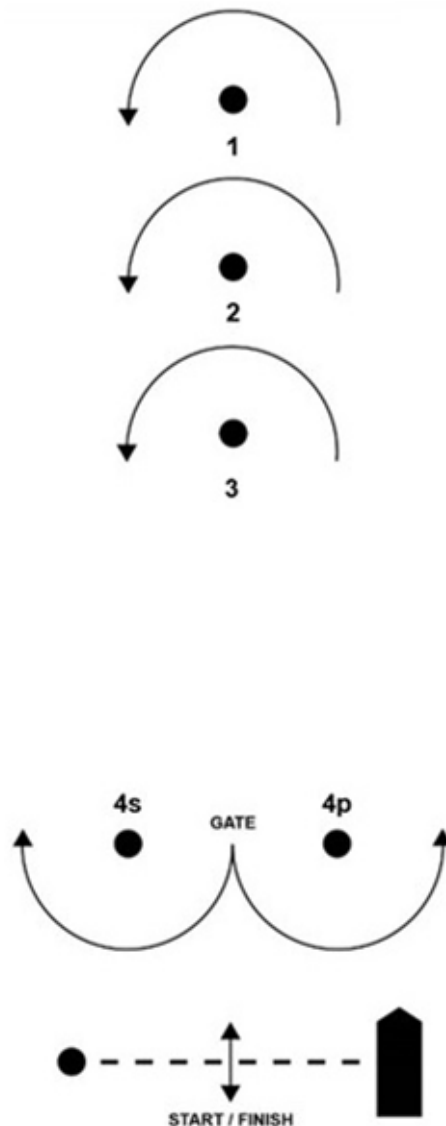
4.3 The course will not be changed after the start.

4.4 At the discretion of the race committee, Marks 1, 2 or 3 may not be laid.

4.5 All marks shall be rounded or passed to port **except the Gate** (see 4.2.3).

4.6 Windward-Leeward Course Diagram

The diagram below shows the course to sail.

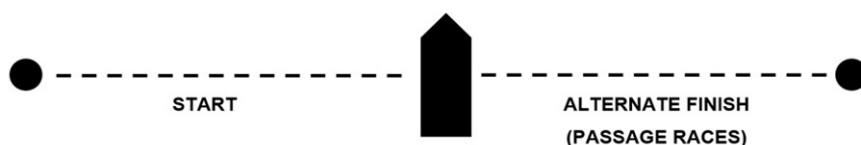


4.7 Description of Passage Courses

- 4.7.1 The course to be sailed will be indicated by course board displayed on the Starting Vessel. Competitors are advised that a different course signal may be used for each Class.
- 4.7.2 The approx. magnetic bearing to the first mark may be displayed from the Race Committee Vessel prior to the start.
- 4.7.3 All marks shall be rounded or passed to starboard.

Courses	Start Area	Description	Finish Area
P1 (N)	Obelisk Bay / Sow & Pigs Reef	Super 40: Start – MW – ME – LB – MW – ME – Alternate Finish (8.3nm approx.)	Obelisk Bay / Sow & Pigs Reef
		Super 30: Start – CP – LB - MW – ME – Alternate Finish (6.3nm approx.)	
P2 (NE)	Hunters Bay / Middle Head / Obelisk Bay / Sow & Pigs Reef	Super 40: Start – MW – ME – CP – RP – EB – MW – ME – CP – Alternate Finish (8.6nm approx.)	Hunters Bay / Middle Head / Obelisk Bay / Sow & Pigs Reef
		Super 30: Start – MW – ME – CP – RP – EB – CP – Alternate Finish (7.0nm approx.)	
P3 (E)	Grotto Point / Gowlland Bombora / Middle Head	Super 40: Start – MW – ME - CP – RP – EB – CP – RP – EB – Alternate Finish (8.1nm approx.)	Grotto Point / Gowlland Bombora / Middle Head
		Super 30: Start – MW – ME - CP – RP – EB – GP – RP – EB – Alternate Finish (6.5nm approx.)	
P4 (SE)	Grotto Point / Gowlland Bombora / Middle Head	Super 40: Start – LB – RP – EB – MW - ME - LB – Alternate Finish (8.0nm approx.)	Grotto Point / Gowlland Bombora / Middle Head
		Super 30: Start – LB – RP – EB – CP - LB – Alternate Finish (6.7nm approx.)	
P5 (S)	Grotto Point / Gowlland Bombora / North Harbour	Super 40: Start – OB – MW – ME – OB - GP - OB – Alternate Finish (8.4nm approx.)	Grotto Point / Gowlland Bombora / North Harbour
		Super 30: Start – OB – MW – ME – OB - Alternate Finish (6.3nm approx.)	
P6 (SW)	Grotto Point / Gowlland Bombora / North Harbour	Super 40: Start – RP – EB – MW – ME – RP – EB – GP – RP - EB – Alternate Finish (8.0nm Approx.)	Grotto Point / Gowlland Bombora / North Harbour
		Super 30: Start – RP – EB – MW – ME – RP – EB – Alternate Finish (6.1nm Approx.)	
P7 (NW)	Sow & Pigs Reef / Camp Cove	Super 40: Start – GP – MW – ME – RP – EB – GP – LB – GP – Alternate Finish (8.2nm approx.)	Sow & Pigs Reef / Camp Cove
		Super 30: Start – GP – MW – ME – LB – RP – EB – GP – Alternate Finish (7.2nm approx.)	

4.6.4 The diagram below shows the Start and Finish lines for Passage Courses:



5 The Start

Boats starting later than 5 minutes after her starting signal will be scored did not start (DNS). This changes RRS A4.1.

6 Time Limit

- 6.1 The time limit for windward-leeward races will be 90 minutes from the Class starting signal.
- 6.2 The time limit for passage races will be 120 minutes from the Class starting signal.

Appendix “IV” – “C” (Charlie) Course Area Performance Class (Spinnaker) Divisions 1, 2 & 3 Performance Class (Non-Spinnaker) Division Classic Keelboats Division

1 Schedule of Races

The First Warning Signal will be made at 1055hrs on each day of racing.

No Warning Signal will be made after 1530 hours on the last day of racing.

A maximum of Four (4) Races are scheduled, a maximum of Two (2) races may be sailed on each day of racing.

Date	Race No.	Course Area	Race Committee	Course Type	Time of 1st Warning Signal
Saturday 1st March	1	Course Area “C”	SASC, RPEYC, MYC Start Boat SASC MV “Kareela” VHF 72 Finish Boat MYC MV “Ready Get Set!” Course Boat RPEYC RHIB	Combination Laid & Fixed Marks Race	1055hrs
	2				ASAP After Race 1
Sunday 2nd March	3				1055hrs
	4				ASAP After Race 3

2 Class Flags

Division	Class Flag
Performance Spinnaker Division 1 (PSD1)	Int. Code Flag “J”
Performance Spinnaker Division 2 (PSD2)	Int. Code Flag “K”
Performance Spinnaker Division 3 (PSD3)	Int. Code Flag “R”
Performance Non-Spinnaker Division (PNSD)	Int. Code Flag “T”
Classic Keelboat Division (CKD)	Int. Code Flag “W”

3 Marks and Courses

3.1 Description of Marks

Marks	Description	Marks	Description
BB	AS Mark south of Sow & Pigs reef	N2	Naval Buoy No.2 (approx. 200m NW of CI)
EC	AS Mark East Channel	N3	Naval Buoy No.3 (approx. 200m N of CI)
CBN	AS Mark Chowder Bay North	PP	AS Mark Point Piper
CBS	AS Mark Chowder Bay South	RB	AS Mark Rose Bay
CI	Clarke Island	SI	Shark Island
LMKB	Laid Mark Kirribilli	SM	AS Mark Shark Island
LMRP	Laid Mark Robertson Point	TB	AS Mark Taylors Bay
NP	AS Mark Nielsen Park		

Marks	Description
AS MARKS	Yellow Spar Marks
LMKB (Laid Mark Kirribilli)	Red Inflatable Buoy East of Kirribilli Wharf Approx. 33° 50.950 S / 151° 13.399 E
LMRP (Laid Mark Robertson Point)	Red Inflatable Buoy South of Robertson Point Approx. 33° 51.029 S / 151° 13.970 E
START	White Inflatable
FINISH	Black & White Inflatable

3.2 Description of Courses

The course to be sailed will be indicated by course board displayed on the Starting Vessel or by a numeral pennant displayed with the class flag.

Competitors are advised that a different course signal may be used for each Class.

Please note: If indicated by a course board, the course designation may be prefixed with the letter "C".

The approximate bearing to the first top mark may be displayed from the Committee Vessel.

Courses	Start Area	Description	Finish Area
1 (NE)	East of Clarke Island	PSD1: Start – BB – NP - SM – N3 - BB – SM – Finish (9.5nm approx.)	West of Clarke Island
		PSD2: Start – CBN – SM – N3 – NP – SM – Finish (8.3nm approx.)	
		PSD3, PNSD & CKD: Start – CBN – SM – BB – SM – Finish (7.3nm approx.)	
2 (NE)	East of Clarke Island	PSD1: Start – CBN – BB - SM – N3 – NP – SM – Finish (8.3nm approx.)	West of Clarke Island
		PSD2: Start – CBN – BB - SM – N3 –SM – Finish (7.3nm approx.)	
		PSD3, PNSD & CKD: Start – CBN – BB - SM – NP – SM – Finish (6.8nm approx.)	
3 (SE)	Athol Bight	PSD1: Start – PP – N2 - LMRP – SM – LMRP – NP - SM - Finish (10.0nm approx.)	West of Clarke Island
		PSD2: Start – PP – N2 - LMRP – SM – LMRP – SM - Finish (9.0 nm approx.)	
		PSD3, PNSD & CKD: Start – PP - CI - LMRP – PP - CI - LMRP – CI – Finish (7.6nm approx.)	
4 (SE)	Athol Bight	PSD1: Start – PP – N2 - LMRP – PP - LMRP - NP - SM – Finish (9.0nm approx.)	West of Clarke Island
		PSD2: Start – PP - LMRP – PP - LMRP - SM – Finish (7.8nm approx.)	
		PSD3, PNSD & CKD: Start – PP – LMKB - LMRP – NP - SM – Finish (7.1nm approx.)	
5 (S)	Athol Bight	PSD1: Start – N3 – N2 - CBN – BB - SM – PP – CBN – SM – Finish (9.4nm approx.)	West of Clarke Island
		PSD2: Start – N3 – N2 - CBN – SM –CBN – SM – Finish (8.3nm approx.)	
		PSD3, PNSD & CKD: Start – N3 – N2 - TB – SM – CBN – SM – Finish (7.3nm approx.)	
6 (S)	Athol Bight	PSD1: Start – N3 – N2 - BB – SM – BB – PP – Finish (8.8nm approx.)	West of Clarke Island
		PSD2: Start – PP – N2 - CBN – SM – TB – PP – Finish (7.7nm approx.)	
		PSD3, PNSD & CKD: Start – N3 – N2 - CBN – SM – TB – CI – Finish (6.7nm approx.)	
7 (E)	Athol Bight	PSD1: Start – SM – LMKB – NP - SM – LMKB – CI – Finish (10.3nm approx.)	West of Clarke Island
		PSD2: Start – SM – LMKB – EC - SM – Finish (8.5nm approx.)	
		PSD3, PNSD & CKD: Start – SM – LMKB – NP - SM – Finish (7.8nm approx.)	
8 (E)	Athol Bight	PSD1: Start – SM – LMKB – EC - SM – Finish (8.6nm approx.)	West of Clarke Island
		PSD2: Start – PP – LMKB – EC - SM – Finish (7.9nm approx.)	
		PSD3, PNSD & CKD: Start – SM – LMKB – SM – Finish (6.8nm approx.)	

9 (W)	Athol Bight	PSD1: Start – LMKB – NP - SM – LMKB – SM - CI – Finish (9.3nm approx.)	West of Clarke Island
		PSD2: Start – LMKB – SM – LMKB – SM - CI – Finish (8.2nm approx.)	
		Division 3: Start – LMKB – NP - SM – LMKB – CI - Finish (7.6nm approx.)	
10 (W)	Athol Bight	PSD1: Start – LMKB – EC - SM – LMKB - CI - Finish (8.4nm approx.)	West of Clarke Island
		PSD2: Start – LMKB – NP - SM – LMKB - CI - Finish (7.6nm approx.)	
		PSD3, PNSD & CKD: Start – LMKB – SM – CI – LMKB - CI - Finish (6.8nm approx.)	
11 (NE)	East of Clark Island	CKD: Start – EC – SM - PP – EC – SM – PP – LMKB – TB – SM – Finish (12.6nm approx.)	West of Clarke Island
12 (SE)	Athol Bight	CKD: Start – RB – SM – TB – RB - PP – LMKB - TB – RB – Finish (11.0nm approx.)	West of Clarke Island
13 (S)	Athol Bight	CKD: Start – N3 – N2 – CBS – RB – N2 – BB - RB – Finish (10.5nm approx.)	West of Clarke Island
14 (E)	Athol Bight	CKD: Start – RB – CI – N2 – LMKB - SI – SM – CI - N2 – SI – RB - PP - Finish (11.0nm approx.)	West of Clarke Island
15 (W)	Athol Bight	CKD: Start – LMKB – BB - SM – LMKB – SM - CI – Finish (10.5nm approx.)	West of Clarke Island

3.3 All Marks are to be rounded or passed to Starboard.

4 The Start

4.1 Boats starting later than 5 minutes after her starting signal will be scored did not start (DNS). This changes RRS A4.1.

4.2 For the first race of each day, races will be started in the order of:

- Performance Spinnaker Division 1 (PSD1)
- Performance Spinnaker Division 2 (PSD2)
- Performance Spinnaker Division 3 (PSD3)
- Performance Non-Spinnaker Division (PNSD)
- Classic Keelboat Division (CKD)

5 The Finish

5.1 The finish area will be West of Clarke Island.

5.2 The finishing line will be between a staff displaying a blue flag on the committee boat and the course side of the finishing mark.

6 Time Limit

6.1 The time limit for courses 1-10 will be 2.5 hours from the Divisional starting signal.

6.2 The time limit for courses 11-15 will be 4 hours from the Divisional starting signal.

7 Course Chartlet

The Course Chartlet in Appendix VII shows the approximate location of marks.

Appendix “V” – “B” (Bravo) Course Area FarEast 28R, J/70, VX-One, Dragon & Etchells Classes

1 Course Areas and Classes

Course Area	Class	Race Committee	Approximate location	VHF Channel
Course Area B	FarEast 28R Int. J/70 Class Int. Dragon VX-One Int. Etchells	RSYS MV “Mischief”	Main Harbour See Appendices IX & X	74

2 Schedule of Races and Sailing Instructions

- The First Scheduled Warning Signal is at 1230hrs on each day of racing.
- No Warning Signal will be made after 1530 hours on Sunday 3rd March.
- A maximum of Six (6) Races are scheduled for the FarEast 28R, J/70 and Dragon Classes with a maximum of three (3) races sailed each day.
- A maximum of three (3) races are scheduled for the International Etchells Class with a maximum of three (3) races sailed each day.
- All Yachts competing on Course Area B shall sail under the RSYS Mini Regatta Sailing Instructions ([click here](#)) as amended by these Sailing Instructions.

Date	Race No.	Course Area	Course Type	Time of 1st Warning Signal
Saturday 1st March	Up to 3 races	Course Area B	W / L	Etchells – 1230hrs Dragon – 1235hrs Far East 28R – 1240hrs J/70 - 1245hrs VX-One - 1250hrs
Sunday 2nd March	Up to 3 races	Course Area B	W / L	Dragon – 1230hrs Far East 28R – 1235hrs J/70 - 1240hrs VX-One - 1245hrs

3 Class Flags

Course Area	Class	Class Flag
Course Area B	International Etchells International Dragon Far East 28R Class International J/70 Class VX-One	Etchells Insignia on a white field Dragon Insignia on a white field International Code Flag “O” J/70 Insignia on a white field VX-One Insignia on a white field

4 Marks

Description of Marks

Course Area	Start / Finish Marks	Course Marks	Change of Course Marks
B	Black & White Inflatable	Yellow /Orange Inflatables with the initials RSYS	Yellow /Orange Inflatables with the initials RSYS

Appendix “VI” – “A” (Alpha) Course Area Historic 18’ Skiffs

1 Schedule of Races

The First Warning Signal will be made at 1414hrs.

No Warning Signal will be made after 1600 hours on the last day of racing.

A maximum of One (1) Race is scheduled.

Date	Race No.	Course Area	Race Committee	Course Type	Time of 1st Warning Signal
Saturday 1st March	1	Course Area “A”	SFS MV ‘KILLO’ VHF 73	Harbour	1414hrs

2 Class Flags

Class	Class Flag
Historic 18’ Skiffs	Historic Flag

3 Marks and Courses

3.1 Description of Marks

Start and Finish Marks	Course Marks
Flag Marks	Flag Marks and AS Yellow spar marks

3.2 Description of Courses

The Course(s) to be sailed are as detailed in the Sydney Flying Squadron Historic 18’ Skiff Club Series Sailing Instructions.

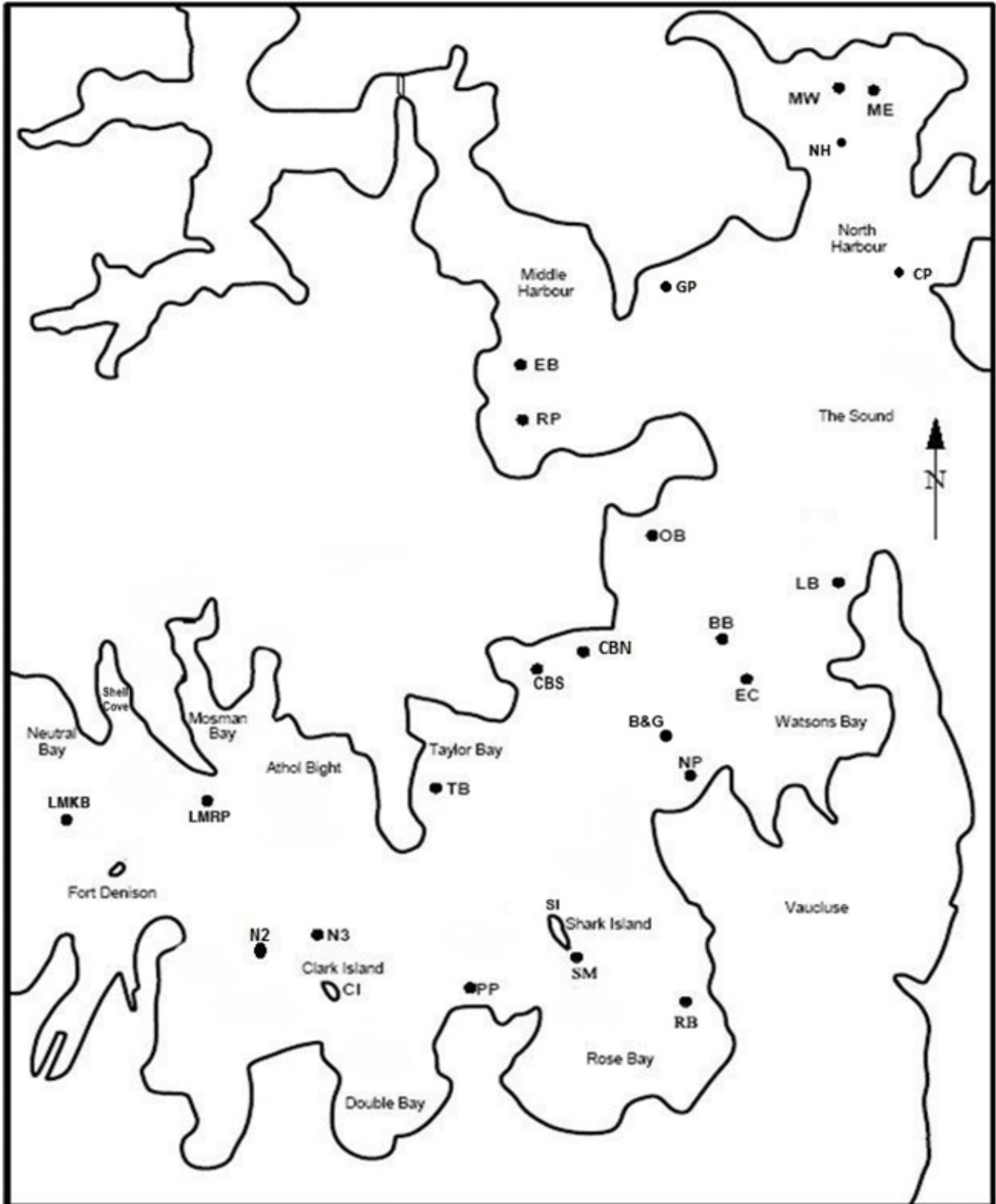
4 The Start

Boats starting later than 5 minutes after her starting signal will be scored did not start (DNS). This changes RRS A4.1.

5 Time Limit

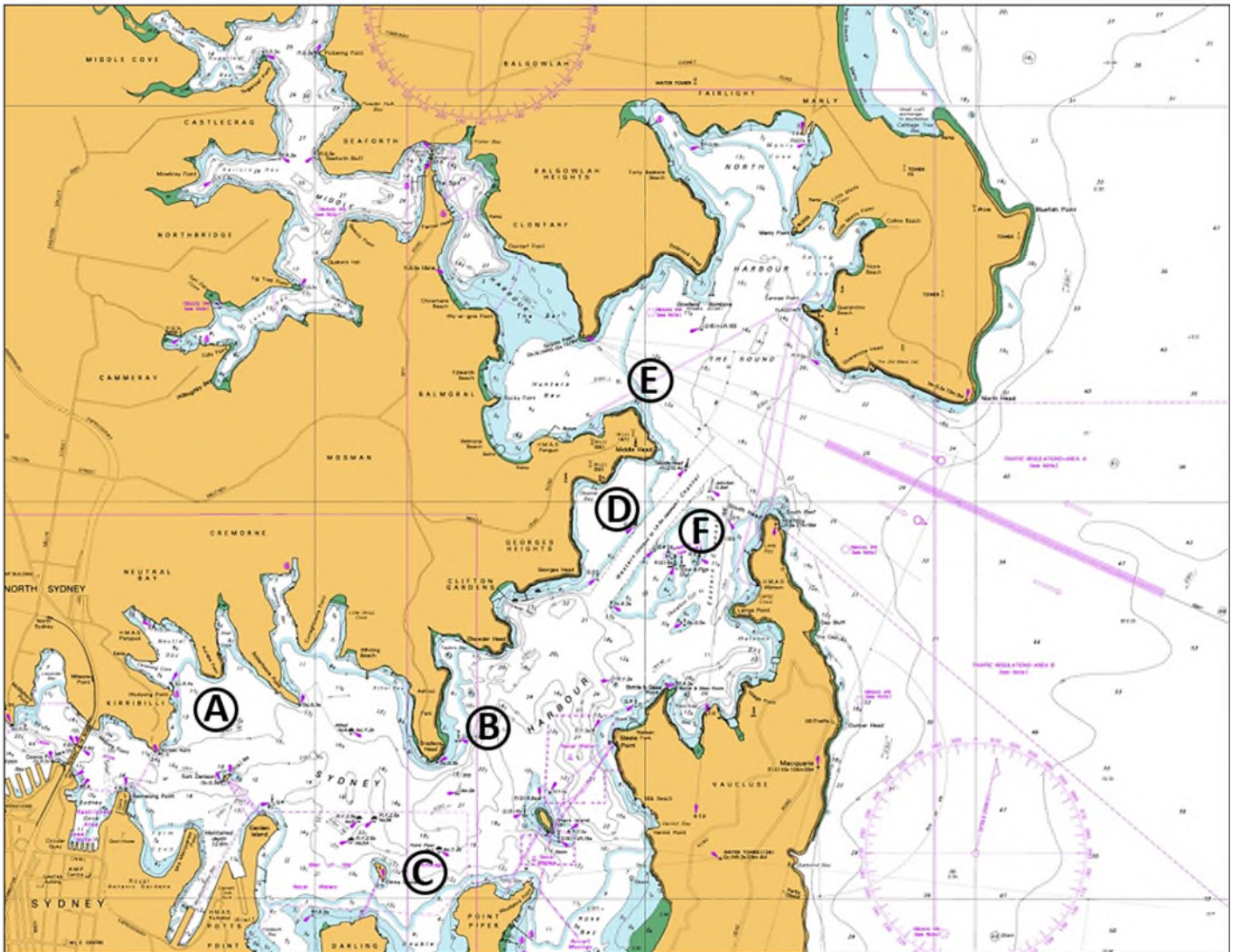
The time limit for all races will be 180 minutes from the Class starting signal.

Appendix "VII"
SYDNEY HARBOUR MARKS



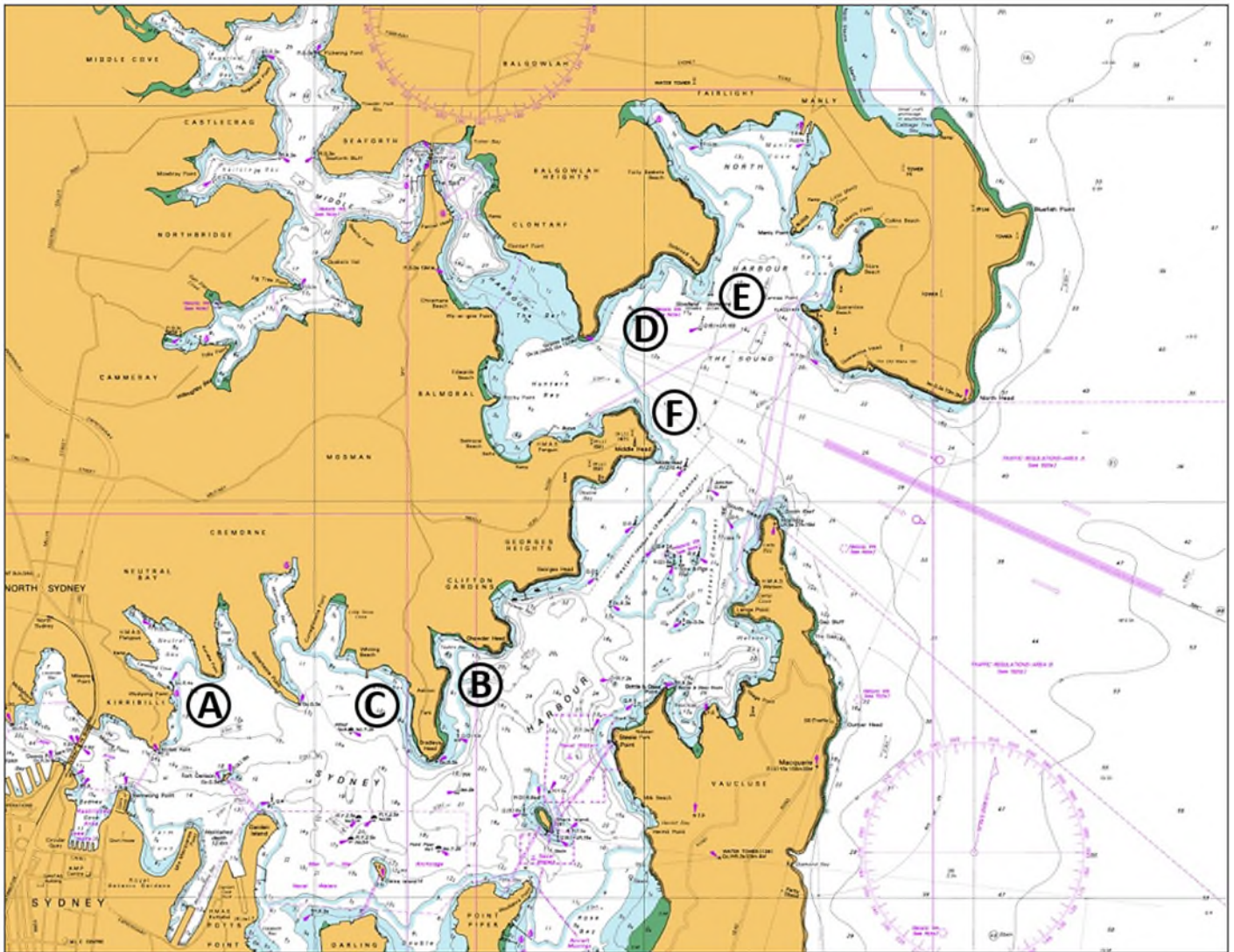
Appendix "VIII"

Typical North Easterly Start Areas



Appendix "IX"

Typical South Easterly Start Areas



— 2025 —
NAUTILUS MARINE INSURANCE
**SYDNEY
HARBOUR**
REGATTA

SPONSORED BY...

Principal Sponsor



NAUTILUS MARINE
INSURANCE

Supporting Sponsors



SUPPORTED BY...

